



Cars | CATALOGUE
The car of your imagination, in your hands

CONTENTS

▣ SERIES ▣ 08

▣ FINISHES ▣ 44

- ▶ Walls ▣ 48
- ▶ Flooring ▣ 50
- ▶ Handrails | Mirrors ▣ 51
- ▶ Operating panels ▣ 52
- ▶ Displays ▣ 54
- ▶ Other Options ▣ 55
- ▶ Ceilings ▣ 56



▣ **Aesthetic transformation:**

- New materials
- New FUSION operating panel
- New IMPULSE pushbutton
- New lighting systems

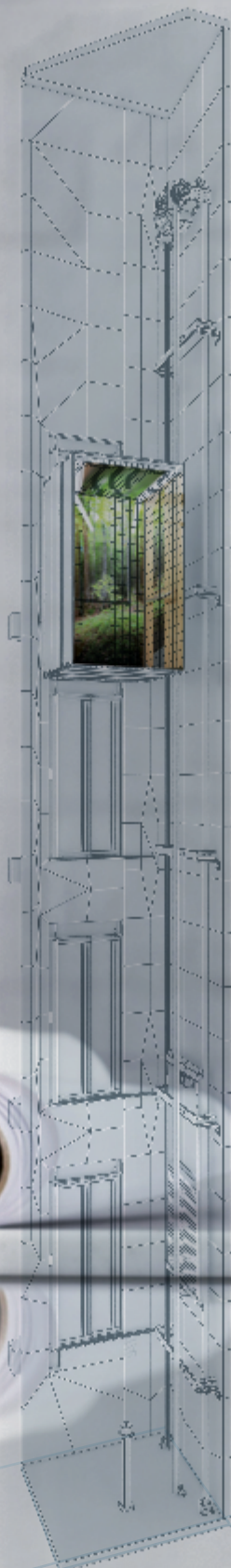
▣ **Extensive range of finishes** available for operating panels, walls, flooring and ceilings

▣ **Use of 100% recyclable material: minimum environmental impact**

▣ **Advantages for users:** less noise inside the car, more space and interaction thanks to the LCD and TFT display

▣ **With MP CarDesigner design your car** wherever and whenever you want

Just imagine your perfect car and we'll do the rest





❖ Car design and building design a perfect fit

A car tailored to your needs

At MP Lifts, we want to make your life easier. That's why we provide you with all the tools necessary for the design of your car to be a perfect fit with the design of your building. No more restrictions, no more looking through lots of options and models which don't fit in with your designs.

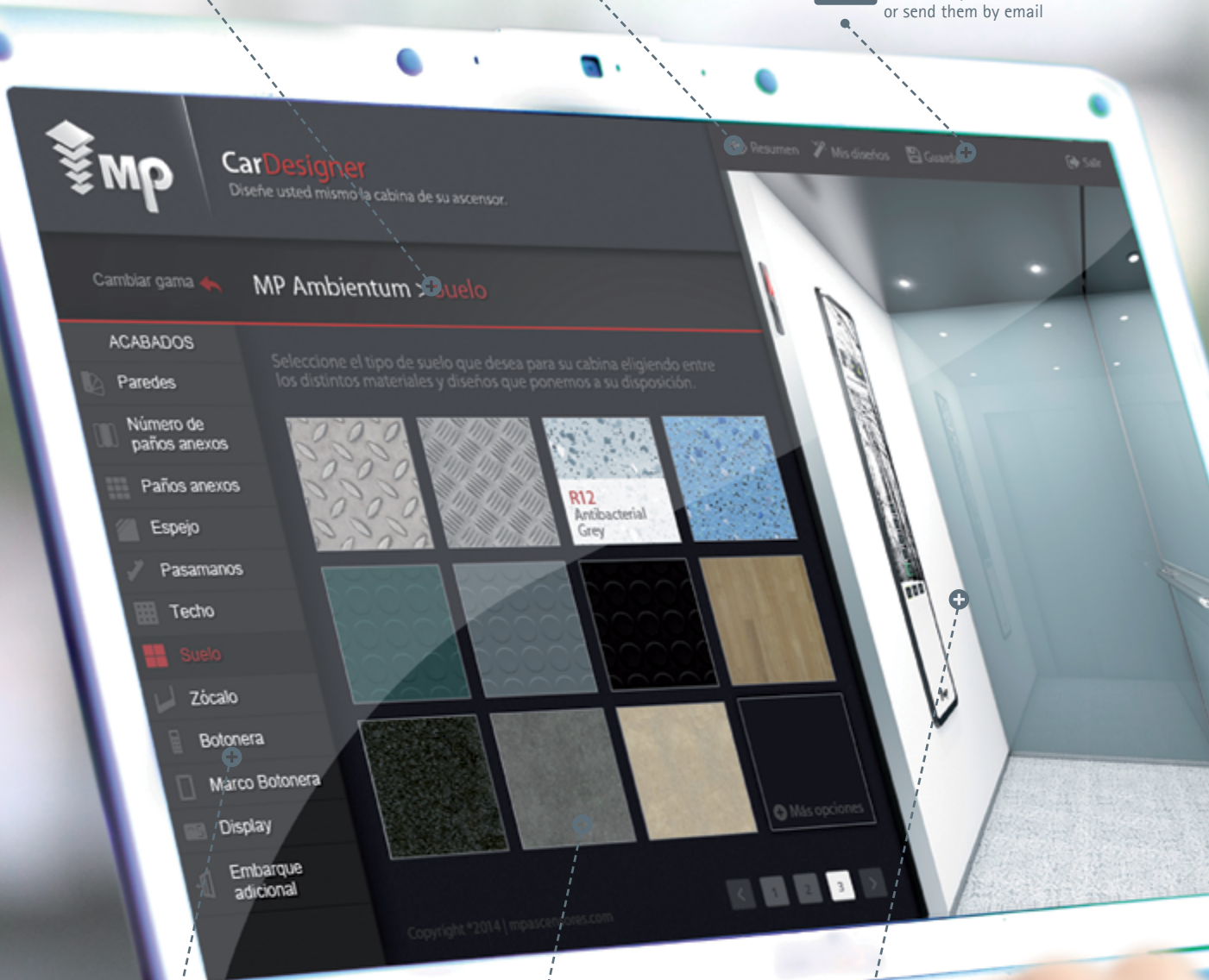
Now all you have to do is choose a car range and then design your car. You can choose from our many finishes and combine them as you want.

The car of your imagination, within your reach

Select a car model and choose the finish you want

Get a detailed report of your car's characteristics

Save your designs and return to them whenever you want, print them out, or send them by email



Decide which part of the car you want to change (floor, mirrors, ceiling, etc.)

Compatible with tablets and mobile devices

View your car with photorealistic finish

FOR MORE INFORMATION, VISIT:
mpcardesigner.com

MP CarDesigner

••• You yourself design the car for your lift

We present you with a new tool
with infinite possibilities

Now, configuring and viewing the car you want will be
very simple.

We provide you with everything you need to design a
car tailored to your needs.

The new range of MP CARevolution cars allows you to
quickly and intuitively customise the various finishes
available, view the configuration chosen, save, print,
send by email and ask for more information on the
resulting car.

An online tool which can be run on any web browser
or mobile or desktop device and is optimised for use on
tablets.

Wherever and whenever you want



mp SERIES

MP CARevolution

▶ VILITER

Plastic-coated steel

koloro

- 14 K01 White
- 15 K04 Night Black
- 16 K10 Atlantic Blue
- 17 K11 Techno Grey
- 18 K17 Nature Beige

avatar

- 19 K41 Platinum
- 20 K42 Timber

▶ STYLE

Melamina | Laminated Plywood

newform

- 21 NE02 Golden Rot
- 22 NE04 Fresno
- 23 NE05 White Orchid
- 24 NE06 Grey Soft

25 exclusive

nature

- 26 NA01 Oak Nature
- 27 NA04 Olmo

▶ SUPRA

Stainless steel

- 28 X02 SB Finish Stainless Steel
- 29 X12 Mirror Finish Steel
- 30 X13 Linen
- 31 X16 SB Finish Stainless Steel Plus
- 32 X22 Super Mirror Shine
- 33 X25 Golden Shine

▶ SUPRAMAX

Chipboard with milled phenolic laminate

- 34 1636

▶ AMBIENTUM

Customised walls with coloured glass panels or printed photos

JL

- 35 AI1
 - 36 AI3
 - 37 AI5
 - 38 AI6
- (OTHER FINISHES: AI2, AI4, AI7, AI10)

color

- 39 AC10
 - 40 AC5
 - 41 AC9
- (OTHER FINISHES: AC1, AC2, AC4, AC7, customized RAL)

42 unike

full

- 43 AI6 || AC4
- (OTHER FINISHES: AI1, AI2, AI3, AI4, AI5, AI7, AC1, AC2, AC5, AC7, AC9, AC10, unike)



The Revolution of Ecodesign

NATURALLY tailored to all styles



Life-cycle assessment, applying ISO standards 14040-14044 and CML-2001 and Eco-indicator methods



Minimum environmental impact



Use of 100% recyclable material

We have used the most up-to-date ECODESIGN methods available on the market for the new MP CARevolution passenger car, right from the conceptual design phase.

For this purpose, a rigorous and detailed **life-cycle assessment** has been done, applying **ISO standards 14040-14044** (in its compulsory phase) and methods CML-2001 and Eco-indicator 99 (in its optional phases).

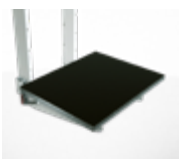
The result of this process is a product with **minimum environmental impact**, this being supported by the use of **materials which completely respect the environment** and are **100% recyclable**, the optimisation and simplification of manufacturing processes, the use of highly efficient lighting and signalling technology and a significant optimisation in terms of its weight, this directly bringing about a reduction in energy consumption by the lift over its service life.

Eco-efficient design tailored to your needs





 Assembly and maintenance made easier

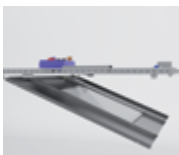


FLOORING

Greater regulation during construction, meaning adaptation to any lift shaft.



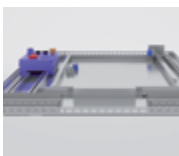
Hinged **OPERATING PANEL** which can be easily accessed for maintenance work.



LED LIGHTING with a two-year guaranteed service life, meaning less maintenance work.



WALL PANELS Optimisation of assembly times thanks to a reduction in weight and to new fixtures.



Integration with **MP ecoGO CONTROLLER**. Pre-wired and with plug, making connecting the lighting easier.



 Countless advantages for users



LESS NOISE inside the car thanks to vibroacoustic car wall panels.



OPTIMISATION OF THE USEFUL HEIGHT INSIDE THE CAR thanks to new lighting concepts.



LESS NOISE inside the car, meaning greater comfort.




MORE INFORMATION FOR USERS thanks to the TFT display.



OPTIMISATION OF THE CAR'S USEFUL AREA. Reduction in the thickness of walls.



 The photos of finishes shown in this catalogue may differ slightly from the actual material used.



VILITER

Plastic-coated steel

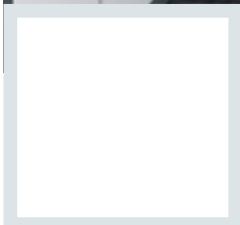
Range
koloro
Solid colours

Finish
K01 White

WALL: K01 White | FLOOR: R24 Circle Black | CEILING: L100
MIRROR: Full with Band | OPERATING PANEL FRAME: AL11 Grey
OPERATING PANEL: FUSION COLOR AC7
DISPLAY: LCD | HANDRAIL: P13X12 | SKIRTING: AL12 Natural

These finishes are shown in the photo below

mpCARevolution



WALL: K01 White

OTHER FINISHES



K04
Night Black



K10
Atlantic Blue



K11
Techno Grey



K17
Nature Beige

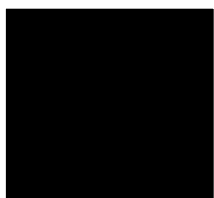
WALL: K04 Night Black | FLOOR: G59 Artificial Granite White
 CEILING: L40 | MIRROR: Width of Panel | OPERATING PANEL
 FRAME: AL04 Black | OPERATING PANEL: FUSION COLOR AC4
 DISPLAY: TFT | HANDRAIL: P12X12 | SKIRTING: AL12 Natural

VILITER | Range **koloro** | Finish **K04 Night Black**
 Plastic-coated steel | Solid colours

These finishes are shown in the photo below







mpCARevolution



WALL: K04 Night Black

OTHER FINISHES

			
K01 White	K10 Atlantic Blue	K11 Techno Grey	K17 Nature Beige

VILITER

Plastic-coated steel

Range
koloro
Solid colours

Finish
K10 Atlantic Blue

WALL: K10 Atlantic Blue | FLOOR: G53 Artificial Granite Night Mist
CEILING: L97 | MIRROR: Width of Panel | OPERATING PANEL
FRAME: AL11 Grey | OPERATING PANEL: FUSION COLOR AC7
DISPLAY: LCD | HANDRAIL: P13X12 | SKIRTING: AL12 Natural

These finishes are shown in the photo below

mpCARevolution



WALL: K10 Atlantic Blue



K01
White



K04
Night Black



K11
Techno Grey



K17
Nature Beige

OTHER FINISHES

WALL: K11 Techno Grey | FLOOR: R28 Circle Grey
 CEILING: L95 | MIRROR: Width of Panel
 OPERATING PANEL: FULL HEIGHT COLUMN X24
 DISPLAY: LCD | HANDRAIL: P13X12 | SKIRTING: AL12 Natural

VILITER
 Plastic-coated steel

Range **koloro**
 Solid colours

Finish **K11 Techno Grey**

These finishes are shown in the photo below



mpCARevolution



WALL: K11 Techno Grey



K01 White



K04 Night Black



K10 Atlantic Blue



K17 Nature Beige

OTHER FINISHES

VILITER

Plastic-coated steel

Range
koloro
Solid colours

Finish
K17 Nature Beige

WALL: K17 Nature Beige | FLOOR: R58 Vinyl Stone Charcoal
Concrete | CEILING: L95 | MIRROR: Width of Panel | OPERATING
PANEL FRAME: AL11 Grey | OPERATING PANEL: FUSION COLOR AC7
DISPLAY: LCD | HANDRAIL: P13X12 | SKIRTING: AL12 Natural

These finishes are shown in the photo below

mpCARevolution



WALL: K17 Nature Beige



K01
White



K04
Night Black



K10
Atlantic Blue



K11
Techno Grey

OTHER FINISHES

WALL: K41 Platinum | FLOOR: G59 Artificial Granite White
 CEILING: L100 | MIRROR: Partial | OPERATING PANEL
 FRAME: AL11 Grey | OPERATING PANEL: FUSION COLOR AC7
 DISPLAY: LCD | HANDRAIL: P13X12 | SKIRTING: AL12 Natural

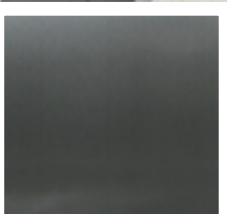
VILITER
 Plastic-coated steel

Range **avatar** Finish **K41 Platinum**
 Imitation wood and stainless steel

These finishes are shown in the photo below



MP CAR Revolution



WALL: K41 Platinum

OTHER FINISHES



K42 Timber

VILITER

Plastic-coated steel

Range
avatar

Imitation wood
and stainless steel

Finish
K42 Timber

WALL: K42 Timber | FLOOR: G59 Artificial Granite White
CEILING: L24 | MIRROR: Width of Panel | OPERATING PANEL
FRAME: AL04 Black | OPERATING PANEL: FUSION SUPRA X02
DISPLAY: LCD | HANDRAIL: P13X12 | SKIRTING: AL12 Natural

These finishes are shown in the photo below

mpCARevolution



WALL: K42 Timber

OTHER FINISHES



K41 Platinum

WALL: NE02 Golden Rot | FLOOR: R42 Vinyl Oak | CEILING: L24
 MIRROR: Width of Panel | OPERATING PANEL FRAME: AL11 Grey
 OPERATING PANEL: FUSION COLOR AC7
 DISPLAY: LCD | HANDRAIL: P13X12 | SKIRTING: AL04 Black

STYLE
 Melamine | Laminated Plywood

Range
newform
 Plastic-coated chipboard (melamine)

Finish
NE02 Golden Rot

These finishes are shown in the photo below



MP CAR Revolution



WALL: NE02 Golden Rot

OTHER FINISHES



NE04 Fresno



NE05 White Orchid



NE06 Grey Soft

Depending on their dimension and decorative element, the walls can be provided with embellishment covers.

STYLE

Melamine | Laminated Plywood

Range

newform

Plastic-coated chipboard (melamine)

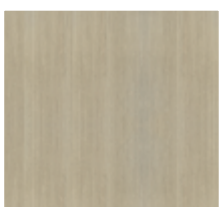
Finish

NE04 Fresno

WALL: NE04 Fresno | FLOOR: G02 Natural Granite Pink
CEILING: L100 | MIRROR: Full with Band | OPERATING PANEL
FRAME: AL11 Grey | OPERATING PANEL: FUSION COLOR AC7
DISPLAY: LCD | HANDRAIL: P13X12 | SKIRTING: AL12 Natural

These finishes are shown in the photo below

mpCARevolution



WALL: NE04 Fresno

OTHER FINISHES



NE02 Golden Rot



NE05 White Orchid



NE06 Grey Soft

WALL: NE05 White Orchid | FLOOR: G04 Natural Granite Crystal White
 CEILING: L61 | MIRROR: Width of Panel | OPERATING PANEL
 FRAME: AL11 Grey | OPERATING PANEL: FUSION COLOR AC5
 DISPLAY: LCD | HANDRAIL: P12X12 | SKIRTING: AL12 Natural

STYLE
 Melamine | Laminated
 Plywood

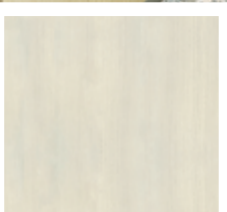
Range
newform
 Plastic-coated
 chipboard
 (melamine)

Finish
**NE05 White
 Orchid**

These finishes are shown in the photo below



mpCARevolution



WALL: NE05 White Orchid

OTHER FINISHES



NE02
 Golden Rot



NE04
 Fresno



NE06 Grey
 Soft

Depending on their dimension and decorative element, the walls can be provided with embellishment covers.

STYLE

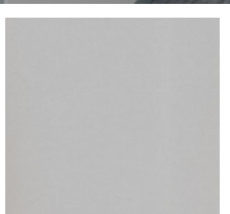
Melamine | Laminated Plywood

Range
newform Finish
NE06 Grey Soft
 Plastic-coated chipboard (melamine)

WALL: NE06 Grey Soft | FLOOR: R73 Indigo Woven
 CEILING: L40 | MIRROR: Width of Panel | OPERATING PANEL
 FRAME: AL11 Grey | OPERATING PANEL: FUSION COLOR AC4
 DISPLAY: TFT | HANDRAIL: P13X12 | SKIRTING: AL12 Natural

These finishes are shown in the photo below

mpCARevolution



WALL: NE06 Grey Soft

OTHER FINISHES



NE02 Golden Rot



NE04 Fresno



NE05 White Orchid

WALL: Exclusive | ATTACHED WALL PANEL: Exclusive | FLOOR:
 G59 Artificial Granite White | CEILING: L40 | MIRROR: Width of Panel
 OPERATING PANEL FRAME: AL04 Black | OPERATING PANEL: SUPRA X02
 DISPLAY: LCD | HANDRAIL: P13X12 | SKIRTING: AL12 Natural

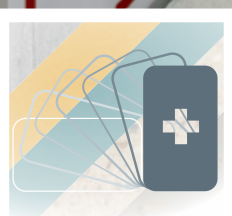
STYLE
 Melamine | Laminated
 Plywood

Range
exclusive
 Laminated
 Plywood

These finishes are shown in the photo below



MP CARevolution



WALLS: Exclusive. Customise the walls with a wide range of finishes and textures.

Depending on their dimension and decorative element, the walls can be provided with embellishment covers.

STYLE

Melamine | Laminated Plywood

Range

nature

Laminated Plywood

Finish

NA01 Oak Nature

WALL: NA01 Oak Nature | FLOOR: G04 Natural Granite Crystal White

CEILING: L100 | MIRROR: Full with Band | OPERATING PANEL

FRAME: AL11 Grey | OPERATING PANEL: FUSION COLOR AC7

DISPLAY: LCD | HANDRAIL: P13X12 | SKIRTING: AL12 Natural

These finishes are shown in the photo below

mpCARevolution



WALL: NA01 Oak Nature

OTHER FINISHES



NA04 Olmo

WALL: NA04 Olmo | FLOOR: G53 Artificial Granite Night Mist
CEILING: L95 | MIRROR: Width of Panel | OPERATING PANEL
FRAME: AL11 Grey | OPERATING PANEL: FUSION COLOR AC7
DISPLAY: LCD | HANDRAIL: P13X12 | SKIRTING: AL12 Natural

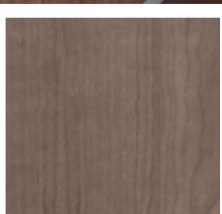
STYLE
Melamine | Laminated
Plywood

Range **nature** | Finish **NA04 Olmo**
Laminated
Plywood

These finishes are shown in the photo below



mpCARevolution



WALL: NA04 Olmo

OTHER FINISHES



NA01
Oak Nature

Depending on their dimension and decorative element, the walls can be provided with embellishment covers.

SUPRA

Stainless steel

Finish
X02 SB Finish
Stainless Steel

WALL: X02 SB Finish Stainless Steel | FLOOR: G01 Natural Granite Black
CEILING: L21 | MIRROR: Width of Panel | OPERATING PANEL
FRAME: AL11 Grey | OPERATING PANEL: FUSION COLOR AC7
DISPLAY: LCD | HANDRAIL: P13X12 | SKIRTING: X02 SB Finish Stainless Steel

These finishes are shown in the photo below

mpCARevolution



WALL: X02 SB Finish
Stainless Steel
(AISI 441)



X12 Mirror
Finish Steel



X13 Linen



X14 Leather
Skin



X16 SB Finish
Stainless
Steel Plus



X22
SuperMirror
Shine



X25 Golden
Shine

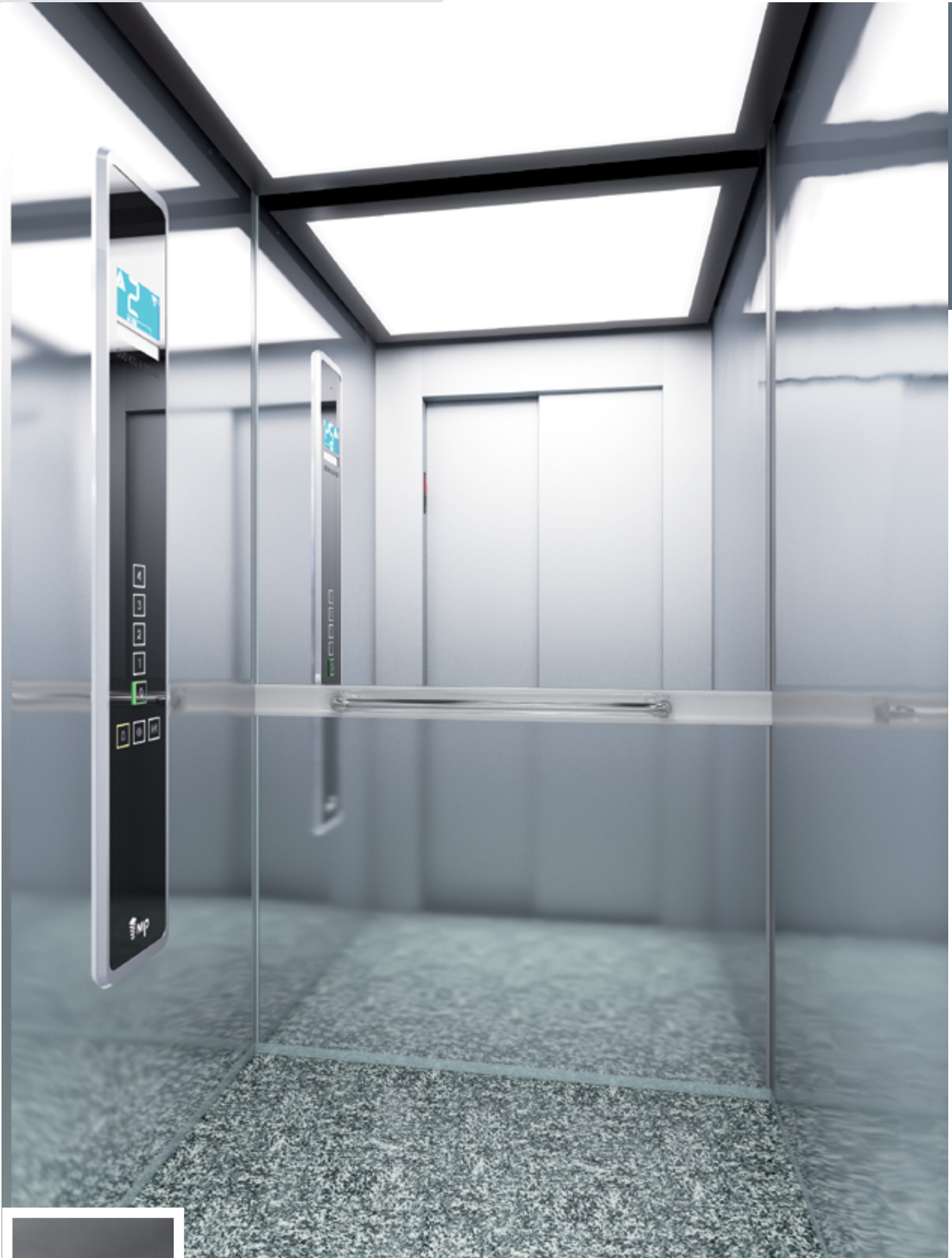
OTHER FINISHES

WALL: X12 Mirror Finish Steel | FLOOR: G01 Natural Granite Black
 CEILING: L100 | MIRROR: Partial | OPERATING PANEL
 FRAME: AL11 Grey | OPERATING PANEL: FUSION COLOR AC7
 DISPLAY: LCD HANDRAIL: P13X12 | SKIRTING: X12 Mirror Finish Steel

SUPRA
 Stainless steel

Finish
X12 Mirror Finish Steel

These finishes are shown in the photo below



mpCARevolution



WALL: X12 Mirror Finish Steel (AISI 304)



X02 SB Finish Stainless Steel



X13 Linen



X14 Leather Skin



X16 SB Finish Stainless Steel Plus



X22 SuperMirror Shine



X25 Golden Shine

OTHER FINISHES

The wall panel consists of several slats; it is not made of a unique part as shown in the picture.

SUPRA

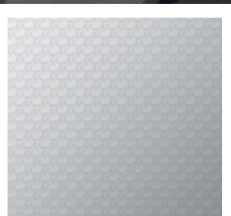
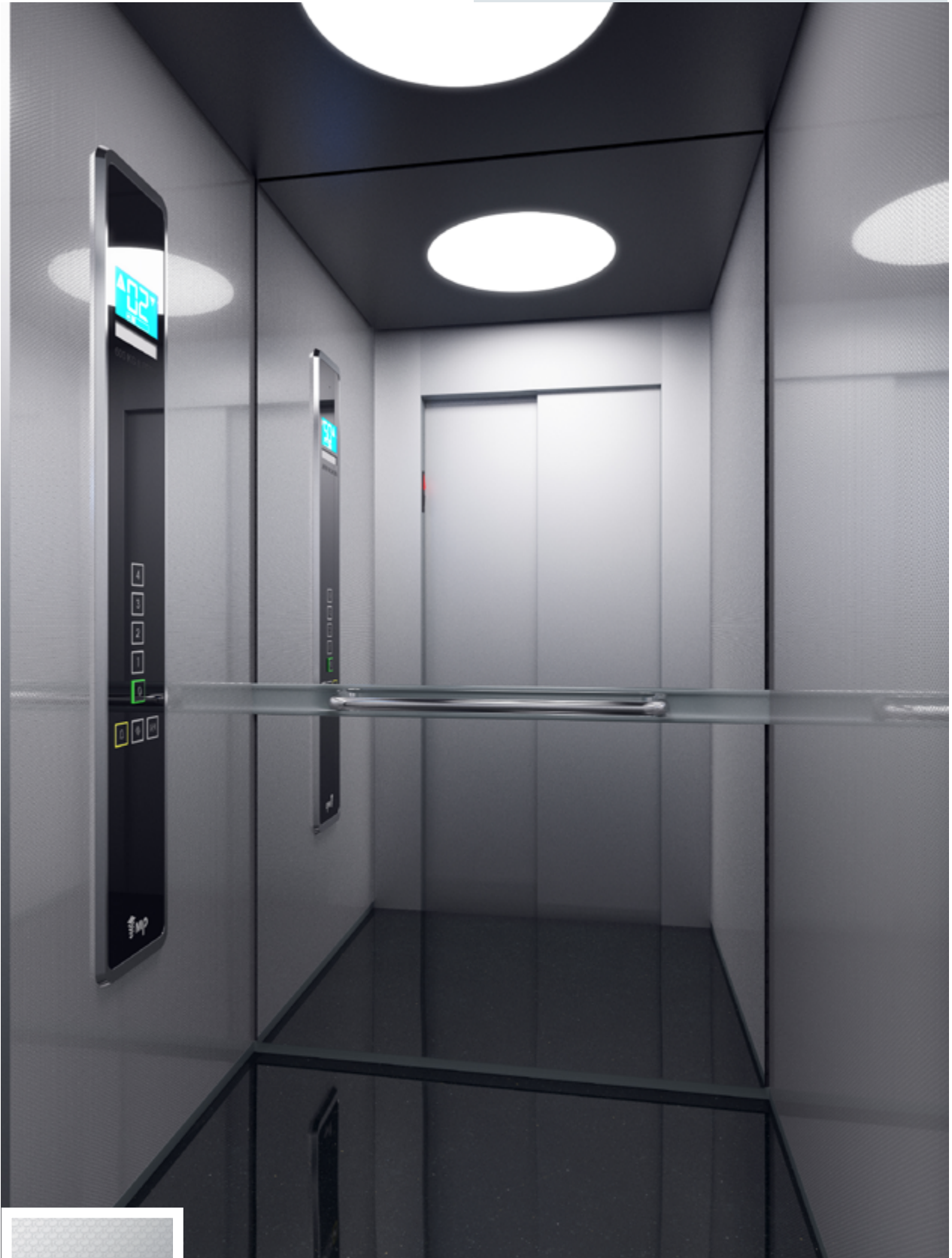
Stainless steel

Finish
X13 Linen

WALL: X13 Linen | FLOOR: G63 Eco Granite Star Light
 CEILING: L96 | MIRROR: Full with Band | OPERATING PANEL FRAME:
 AL11 Grey | OPERATING PANEL: FUSION COLOR AC7
 DISPLAY: LCD | HANDRAIL: P13X12 | SKIRTING: X13 Linen

These finishes are shown in the photo below

mpCARevolution



WALL: X13 Linen (AISI 304)

OTHER FINISHES



X02 SB Finish Stainless Steel



X12 Mirror Finish Steel



X14 Leather Skin



X16 SB Finish Stainless Steel Plus



X22 SuperMirror Shine



X25 Golden Shine

WALL: X16 SB Finish Stainless Steel Plus | FLOOR: G53 Artificial Granite Night Mist | CEILING: L24 | MIRROR: Width of Panel | OPERATING PANEL FRAME: AL04 Black | OPERATING PANEL: FUSION SUPRA X25 | DISPLAY: LCD | HANDRAIL: P12X12 | SKIRTING: X16 SB Finish Stainless Steel Plus

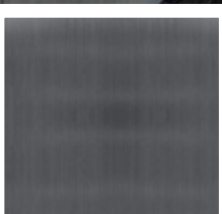
SUPRA
Stainless steel

Finish
**X16 SB Finish
Stainless Steel Plus**

These finishes are shown in the photo below



mpCARevolution



WALL: X16 SB Finish
Stainless Steel Plus
(AISI 316)



X02
SB Finish
Stainless Steel



X12
Mirror Finish
Steel



X13
Linen



X14
Leather
Skin



X22
SuperMirror
Shine



X25
Golden Shine

OTHER FINISHES

The wall panel consists of several slats; it is not made of a unique part as shown in the picture.

SUPRA

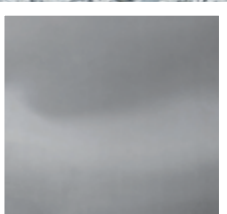
Stainless steel

Finish
X22 SuperMirror Shine

WALL: X22 SuperMirror Shine | FLOOR: G04 Natural Granite Crystal White
 CEILING: L21 | MIRROR: Width of Panel | OPERATING PANEL
 FRAME: AL11 Grey | OPERATING PANEL: FUSION COLOR AC7
 DISPLAY: LCD | HANDRAIL: P13X12 | SKIRTING: X22 Super Mirror Shine

These finishes are shown in the photo below

mpCARevolution



WALL: X22 SuperMirror Shine (AISI 304)



X02 SB Finish Stainless Steel



X12 Mirror Finish Steel



X13 Linen



X14 Leather Skin



X16 SB Finish Stainless Steel Plus



X25 Golden Shine

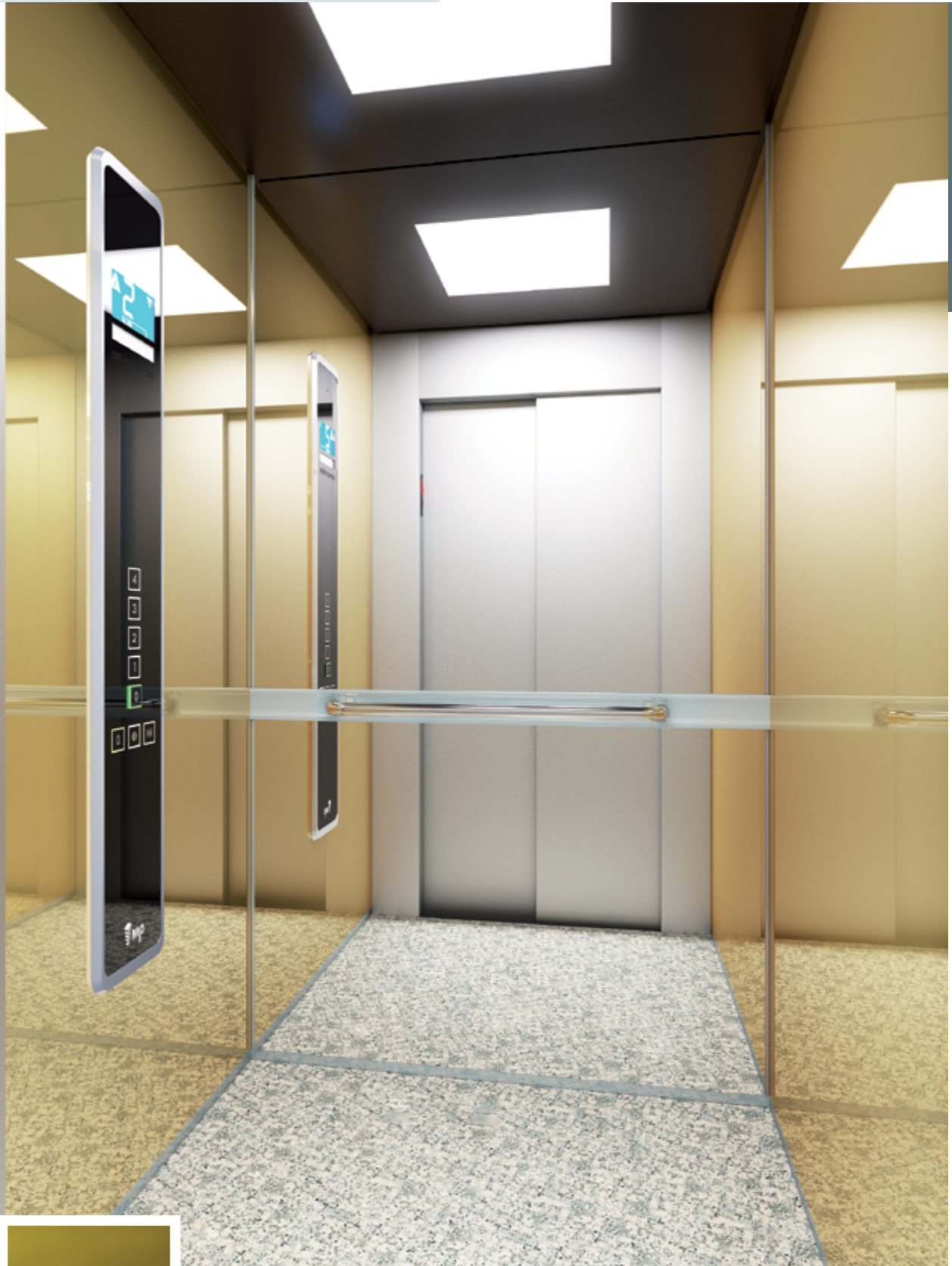
OTHER FINISHES

WALL: X25 Golden Shine | FLOOR: G04 Natural Granite Crystal White
 CEILING: L97 | MIRROR: Full with Band | OPERATING PANEL FRAME: AL11
 Grey | OPERATING PANEL: FUSION COLOR AC7 | DISPLAY: LCD
 HANDRAIL: P13X12 | SKIRTING: X02 SB Finish Stainless Steel

SUPRA
 Stainless steel

Finish
X25 Golden Shine

These finishes are shown in the photo below



mpCARevolution



WALL: X25 Golden Shine
 (AISI 304)



X02
 SB Finish
 Stainless Steel



X12
 Mirror Finish
 Steel



X13
 Linen



X14
 Leather
 Skin



X16 SB
 Finish Stainless
 Steel Plus



X22
 SuperMirror
 Shine

OTHER FINISHES

The wall panel consists of several slats; it is not made of a unique part as shown in the picture.

SUPRAMAX

Chipboard with milled phenolic laminate

Finish
1636

WALL: 1636 | FLOOR: G59 Artificial Granite White

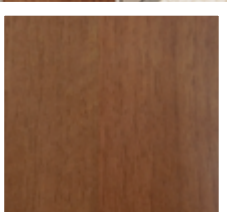
CEILING: L97 | MIRROR: Width of Panel

OPERATING PANEL: FULL HEIGHT COLUMN X02

DISPLAY: LCD | HANDRAIL: P13X12 | SKIRTING: AL12 Natural

These finishes are shown in the photo below

mpCARevolution



WALL: 1636

WALL: AI1 | ATTACHED WALL PANEL: NA04 Olmo | FLOOR: R59 Vinyl Stone Grey Concrete | CEILING: L61 | MIRROR: Width of Panel
 OPERATING PANEL FRAME: AL04 Black | OPERATING PANEL: FUSION JL AI1 | DISPLAY: LCD | HANDRAIL: P13X12 | SKIRTING: AL12 Natural

AMBIENTUM

Customised walls with coloured glass panels or printed photos

Range JL | Finish AI1

These finishes are shown in the photo below



mpCARevolution



WALL: AI1



AI2



AI3



AI4



AI5



AI6



AI7



AI10

OTHER FINISHES

AMBIENTUM

Customised walls with coloured glass panels or printed photos

Range JL Finish AI3

WALL: AI3 | ATTACHED WALL PANEL: NA04 Olmo | FLOOR: G04 Natural Granite Crystal White | CEILING: L96 | MIRROR: Width of Panel | OPERATING PANEL FRAME: AL11 Grey | OPERATING PANEL: FUSION COLOR AC10 | DISPLAY: LCD | HANDRAIL: P13X12 | SKIRTING: AL12 Natural

These finishes are shown in the photo below

mpCARevolution



WALL: AI3

OTHER FINISHES



AI1



AI2



AI4



AI5



AI6



AI7



AI10

WALL: AI5 | ATTACHED WALL PANEL: NE05 White Orchid | FLOOR:
 G59 Artificial Granite White | CEILING: L40 | MIRROR: Width of Panel
 OPERATING PANEL FRAME: AL04 Black | OPERATING PANEL: FUSION
 JL AI5 | DISPLAY: TFT | HANDRAIL: P13X12 | SKIRTING: AL12 Natural

AMBIENTUM

Customised walls with coloured
 glass panels or printed photos

Range JL | Finish AI5

These finishes are shown in the photo below



mpCARevolution



WALL: AI5

OTHER FINISHES



AI1



AI2



AI3



AI4



AI6



AI7



AI10

AMBIENTUM

Customised walls with coloured glass panels or printed photos

Range JL Finish AI6

WALL: AI6 | ATTACHED WALL PANEL: K10 Atlantic Blue | FLOOR: R13 Antibacterial Blue | CEILING: L100 | MIRROR: Width of Panel
 OPERATING PANEL FRAME: AL04 Black | OPERATING PANEL: FUSION JL AI6 DISPLAY: TFT | HANDRAIL: P13X12 | SKIRTING: AL12 Natural

These finishes are shown in the photo below

mpCARevolution



WALL: AI 6

OTHER FINISHES



AI1



AI2



AI3



AI4



AI5



AI7



AI10

WALL: AC10 | ATTACHED WALL PANEL: K01 White
 FLOOR: R14 Antibacterial Grey | CEILING: L40 | MIRROR: Partial
 OPERATING PANEL FRAME: AL04 Black | OPERATING PANEL: FUSION
 JL A15 | DISPLAY: TFT | HANDRAIL: P13X12 | SKIRTING: AL12 Natural

AMBIENTUM

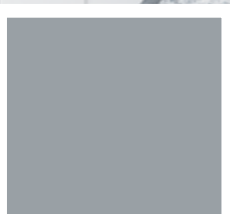
Customised walls with coloured glass panels or printed photos

Range **color** Finish **AC10**

These finishes are shown in the photo below



MP CARevolution



WALL: AC10



AC1



AC2



AC4



AC5



AC7



AC9

OTHER FINISHES



customized

AMBIENTUM

Customised walls with coloured glass panels or printed photos

Range **color** Finish **AC5**

WALL: AC5 | ATTACHED WALL PANEL: K01 White | FLOOR: G54 Artificial Granite Mist | CEILING: L100 | MIRROR: Partial | OPERATING PANEL FRAME: AL04 Black | OPERATING PANEL: FUSION JL A11 | DISPLAY: LCD | HANDRAIL: P13X12 | SKIRTING: AL04 Black

These finishes are shown in the photo below

mpCARevolution



WALL: AC5



AC1



AC2



AC4



AC7



AC9



AC10

OTHER FINISHES



customized

WALL: AC9 | ATTACHED WALL PANEL: NA01 Oak Nature | FLOOR: R42 Vinyl Oak | CEILING: L40 | MIRROR: Partial | OPERATING PANEL FRAME: AL04 Black | OPERATING PANEL: FUSION JL A12 | DISPLAY: TFT HANDRAIL: P13X12 | SKIRTING: AL04 Black

AMBIENTUM

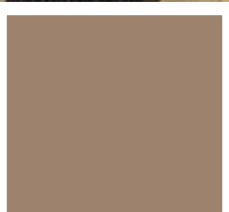
Customised walls with coloured glass panels or printed photos

Range **color** Finish **AC9**

These finishes are shown in the photo below



MP CARevolution



WALL: AC9



AC1



AC2



AC4



AC5



AC7



AC10



customized

OTHER FINISHES

AMBIENTUM

Customised walls with coloured glass panels or printed photos

Range
unike

WALL: Unike | ATTACHED WALL PANEL: NE05 White Orchid | FLOOR: G59 Artificial Granite White | CEILING: L40 | MIRROR: Width of Panel | OPERATING PANEL FRAME: AL04 Black | OPERATING PANEL: SUPRA X02 | DISPLAY: LCD | HANDRAIL: P13X12 | SKIRTING: AL12 Natural

These finishes are shown in the photo below

These finishes are shown in the photo below

mpCARevolution



WALL: unike. Customise the wall with your own images.

WALL: AI6 | ATTACHED WALL PANEL: AC4
 FLOOR: R61 Vinyl Stone | CEILING: L40 | MIRROR: Partial
 OPERATING PANEL FRAME: AL11 Grey | OPERATING PANEL: FUSION JL AI6
 DISPLAY: LCD | HANDRAIL: P13X12 | SKIRTING: AL12 Natural

AMBIENTUM

All the walls made of coloured glass panels or printed photos and the COP integrated into the glass panel

Range
full

Finish
AI6 || AC4

These finishes are shown in the photo below



mpCARevolution



NOTE: The panel supporting the COP can only be chosen from color range, NEVER from JL range.



OTHER FINISHES

ATTACHED WALL PANEL: AC4

WALL: AI6



AC1



AC2



AC5



AC7



AC9



AC10



customized



AI1



AI2



AI3



AI4



AI5



AI7



AI10



unike

A close-up photograph of a hand holding a transparent, rectangular tablet. The hand is positioned in the foreground, with fingers slightly curled around the edges of the tablet. The background is a soft, out-of-focus light blue. On the right side of the image, there is a faint, light blue grid pattern that appears to be part of the tablet's surface or a background element. The word "FINISHES" is printed in a bold, red, sans-serif font on the tablet. To the left of the text is a red icon consisting of a cluster of small dots arranged in a roughly rectangular shape.

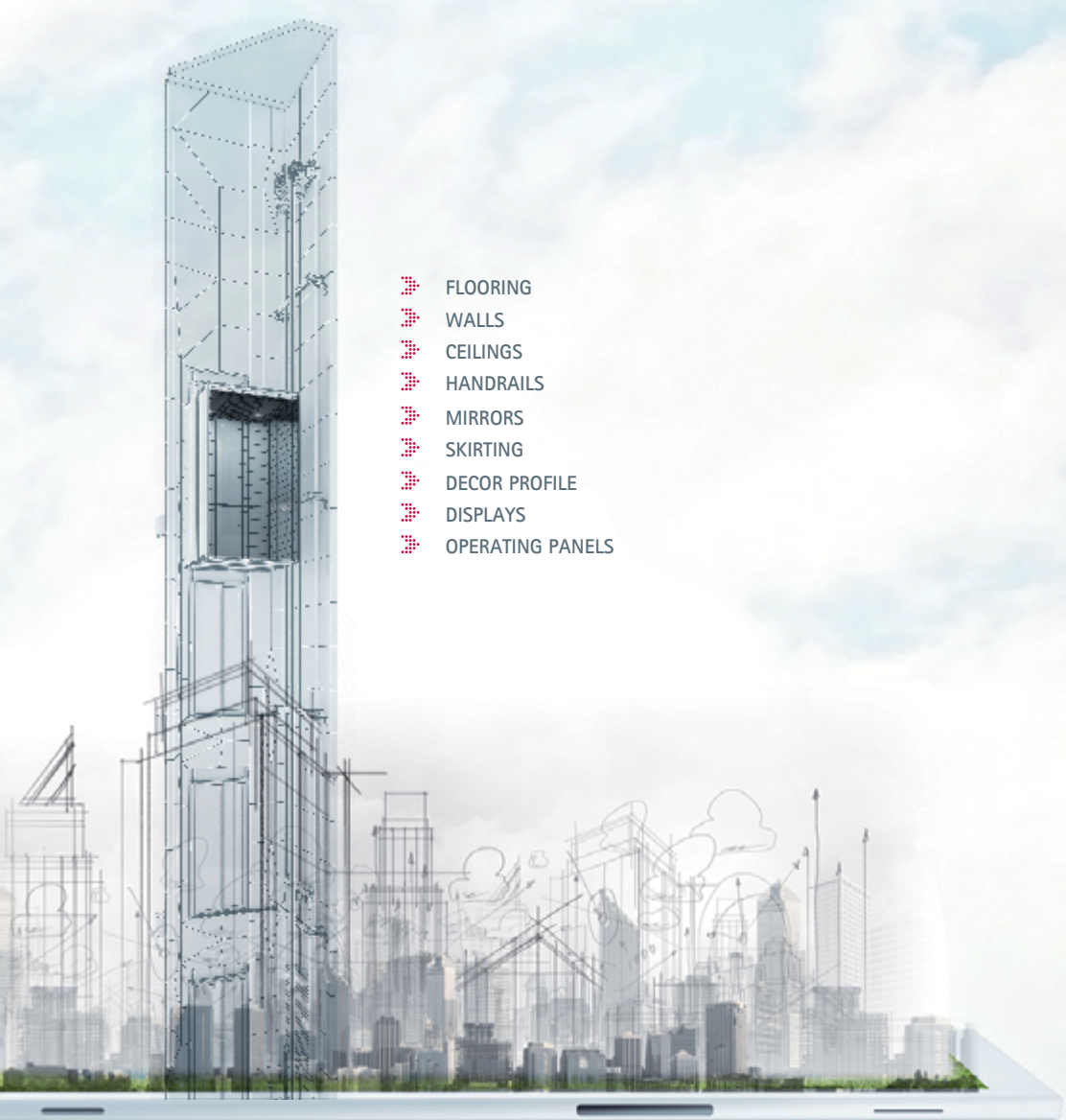
FINISHES

MP CARevolution

FINISHES

- 48 WALLS
- 50 FLOORING
- 51 HANDRAILS | MIRRORS
- 52 OPERATING PANELS
- 54 DISPLAYS
- 55 SKIRTING
DECOR PROFILE
- 56 CEILINGS





- ▣ FLOORING
- ▣ WALLS
- ▣ CEILINGS
- ▣ HANDRAILS
- ▣ MIRRORS
- ▣ SKIRTING
- ▣ DECOR PROFILE
- ▣ DISPLAYS
- ▣ OPERATING PANELS



Customised aesthetic and innovative solutions



Our extensive range of finishes allows you to design your own car. Choose the combination which takes your fancy and fits in with your budget.

The versatility of our cars offers you solutions that are not just functional, but also aesthetic and flexible.

Infinite aesthetic and functional possibilities




 STANDARD


WALLS

▼ VILITER | Plastic-coated steel


▼ koloro
Solid colours




K01
White




K10
Atlantic Blue



K17
Nature Beige

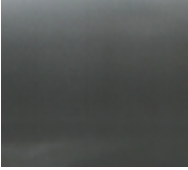


K04
Night Black




K11
Techno Grey

▼ avatar | Imitation wood and stainless steel




K41
Platinum




K42
Timber

▼ SUPRA | Stainless steel


▼ SUPRA




X02 SB Finish
Stainless Steel



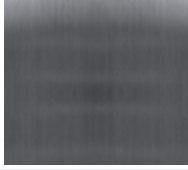
X12
Mirror Finish Steel



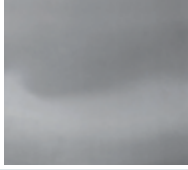
X13
Linen




X14
Leather Skin



X16 SB Finish
Stainless Steel Plus



X22
SuperMirror Shine



X25
Golden Shine

▼ STYLE
Melamine | Laminated Plywood

▼ newform | Plastic-coated chipboard (melamine)



NE02
Golden Rot



NE05
White Orchid



NE04
Fresno



NE06
Grey Soft

▼ nature
Laminated Plywood



NA01
Oak Nature



NA04
Olmo

▼ exclusive
Laminated Plywood



URBAN | MARMI/PIETRE | UNITI



CLASSIC WOODS | SIAM | STURDUST



TOTTOCOLORE | GOLD | MODERN WOODS



TEXTURES


Possibility to separately select the finish and the texture.

Wide range of possible combinations, all available via the order taking tool, HelpMATE.

▼ SUPRAMAX | Chipboard with milled phenolic laminate



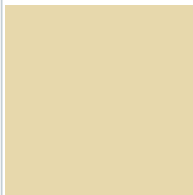




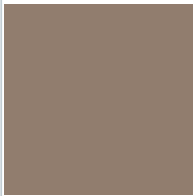
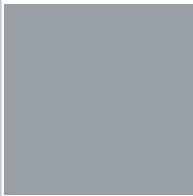
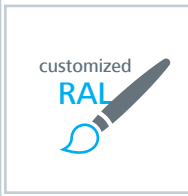
1636

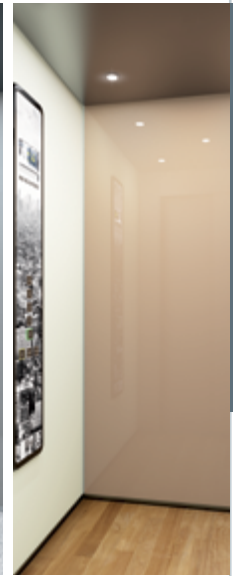
 **Material:** stainless steel AISI 304, except X02: AISI 441 and X16: AISI 316.

Choose your WALL 

STANDARD

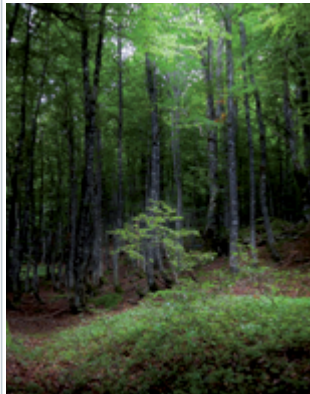






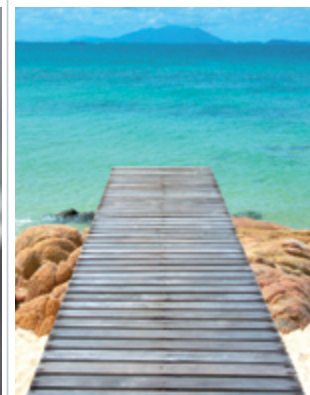
▼ AMBIENTUM color
Customised walls with coloured glass panels

			
AC1	AC2	AC4	AC5
			
AC7	AC9	AC10	







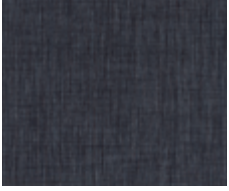
WALLS

▼ AMBIENTUM JL
Customised walls with printed photos

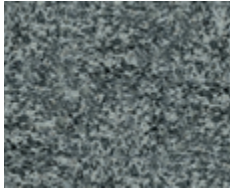

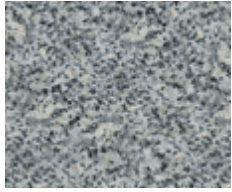
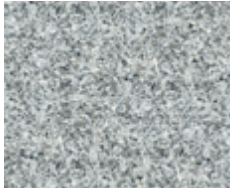
			
AI1	AI2	AI3	AI4
			
AI5	AI6	AI7	AI10





STANDARD

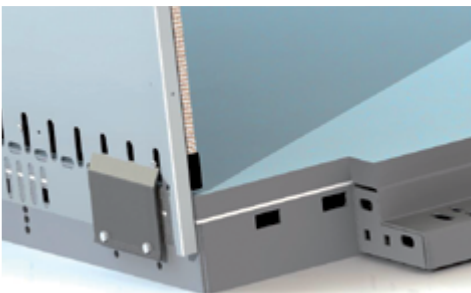
▼ CIRCLE RUBBER			▼ VINYL RUBBER	
				
R23 Circle Blue	R24 Circle Black	R28 Circle Grey	R42 Vinyl Oak	R73 Indigo Woven

▼ STONE RUBBER		▼ ANTIBACTERIAL VINYL RUBBER	
			
R59 Vinyl Stone Grey Concrete	R61 Vinyl Stone Black Concrete	R13 Antibacterial Blue	R14 Antibacterial Grey

▼ NATURAL GRANITE			
			
G01 Natural Granite Black	G02 Natural Granite Pink	G03 Natural Granite Pearl Grey	G04 Natural Granite Crystal White

▼ ARTIFICIAL GRANITE		
		
G53 Artificial Granite Night Mist2	G54 Artificial Granite Mist	G59 Artificial Granite White

▼ METAL	
	
C03 Checkered Aluminium	C04 Teardrop Steel



- ▼ New car flooring
- Facilitates car-frame fixtures.
 - New wall panel fixtures which facilitate joining of wall panels to floor and ceiling.



STANDARD

▼ HANDRAILS



P13X12



P12X12



P13X25



P12X25

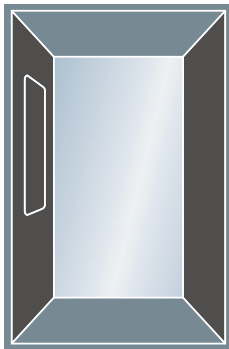


P13E04

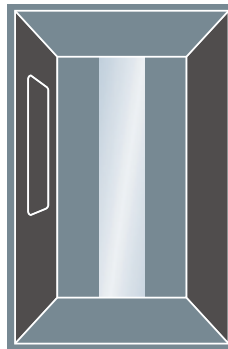


P12E04

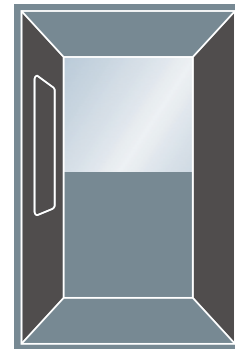
▼ MIRRORS



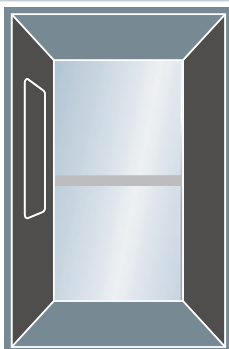
Full



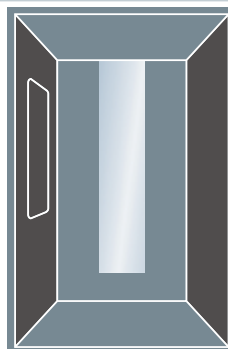
Width of Panel



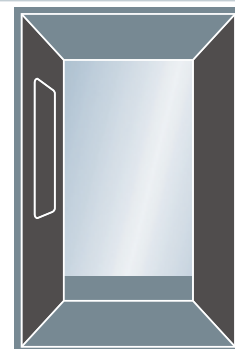
Partial



Full with Band



Partial Panel Width



Partial EN 81/70



STANDARD

Versatility and design within your reach

Provides a wide variety of COPs, both full height type and medium height, with different colours, stainless steel or with pictures that you will choose in our album or bring yourself.



A new concept for operating panels

Folding COPs with an easy access for maintenance work.

FUSION COPs (medium height): 1535 x 240 (mm) / Full Height Column: 2040 x 230 (mm).

FUSION COLOR OPERATING PANEL



▲ AC1

▲ AC2

▲ AC4

▲ AC5

▲ AC7

▲ AC9

▲ AC10

customized
RAL

Material: thermoplastic polyester extruded (PET). Aluminium frame, black (AL04) or grey (AL11) coloured.

FUSION JL OPERATING PANEL



▲ AI1

▲ AI2

▲ AI3

▲ AI4

▲ AI5

▲ AI6

▲ AI7

▲ AI10

Material: thermoplastic polyester extruded (PET). Aluminium frame, black (AL04) or grey (AL11) coloured.



STANDARD

FULL HEIGHT COLUMN OPERATING PANEL



▲ X02 ▲ X12 ▲ X13 ▲ X16 ▲ X22 ▲ X24 ▲ X25

Material: stainless steel AISI 304, except X02: AISI 441 and X16: AISI 316.

FUSION SUPRA OPERATING PANEL



▲ SUPRA X02 ▲ SUPRA X12 ▲ SUPRA X13 ▲ SUPRA X16 ▲ SUPRA X22 ▲ SUPRA X24 ▲ SUPRA X25

Material: stainless steel AISI 304, except X02: AISI 441 and X16: AISI 316. Aluminium frame, black (AL04) coloured.



STANDARD

DISPLAYS



More information for users

We offer a wide range of customised TFT and LCD displays. The new TFT designs offer outstanding image quality, providing users with clearer and more accurate information.

Cutting-edge technology for you

Adaptable to any model

DISPLAYS TFT-070E and LCD-070E with MP ecoGO controller.

TFT-070E ▶

7"



LCD-070E ▶

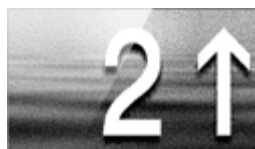
7"



DISPLAYS TFT-043 and 639 with Via Serie or MicroBASIC controllers.

TFT-043 ▶

4,3"



639 ▶

2,3"



DISPLAY VS-LCD with Via Serie controllers.

VS-LCD ▶

2,5"



STANDARD

SKIRTING

Only allowed with FUSION SUPRA



X25 Golden Shine

X13 Linen

X12 Mirror Finish Steel

X02 SB Finish Stainless Steel

X16 SB Finish Stainless Steel Plus

X22 Super Mirror Shine

Standard finish. Not allowed with FUSION SUPRA

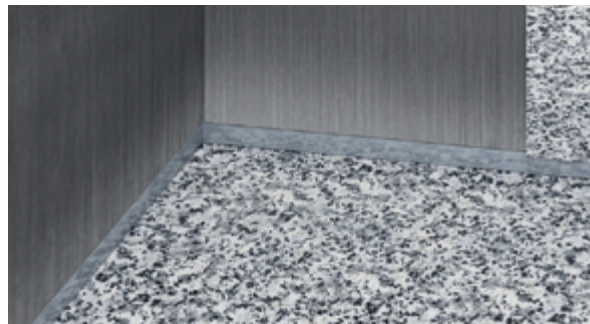


AL04 Black

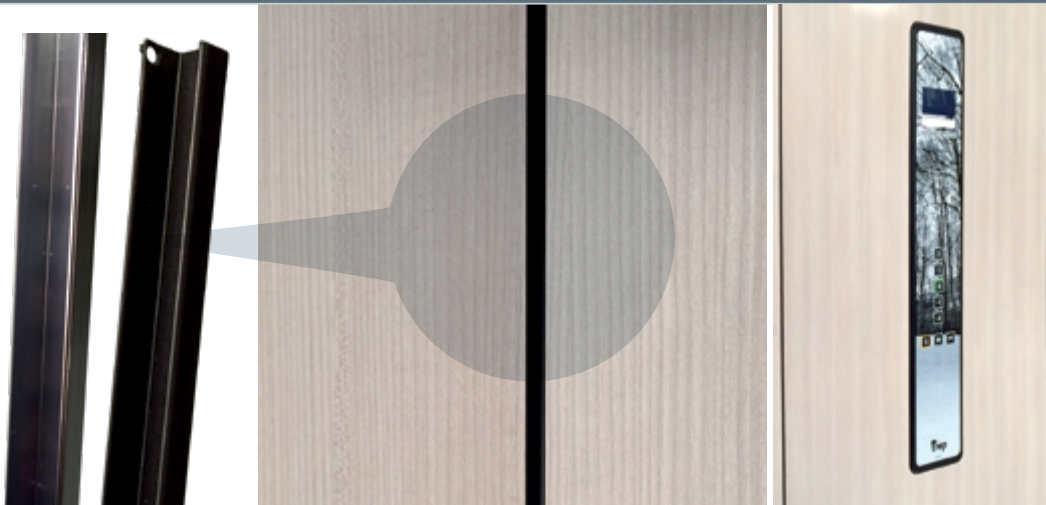
AL12 Natural



Material: stainless steel AISI 304, except X02: AISI 441 and X16: AISI 316.



DECOR PROFILE

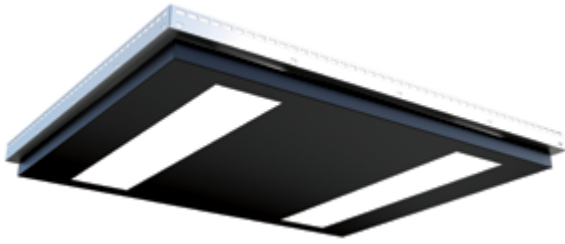


NOTE: NOTE: Only with STYLE and SUPRAMAX decors

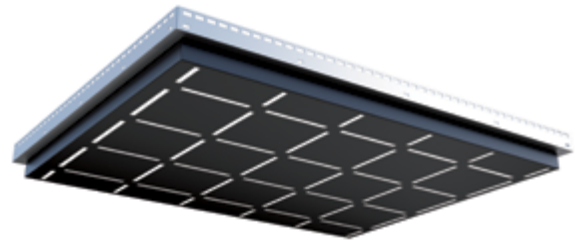


 STANDARD

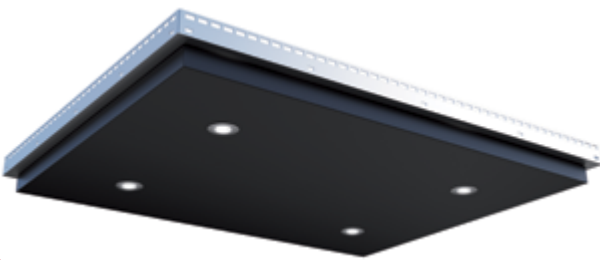
▼ H80 LIGHTING



L21



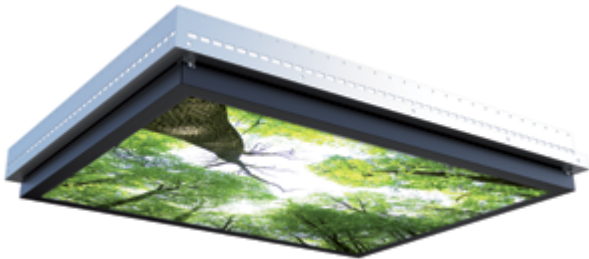
L24



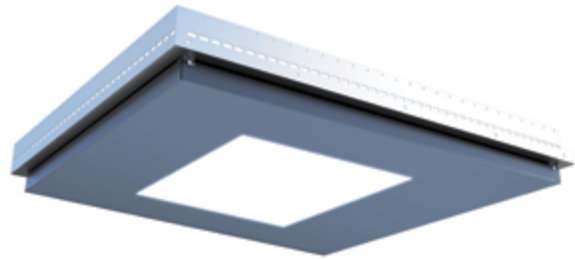
L40



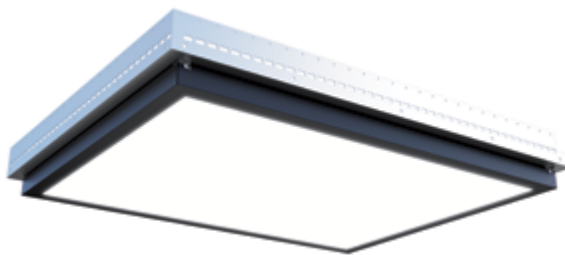
L150



L151



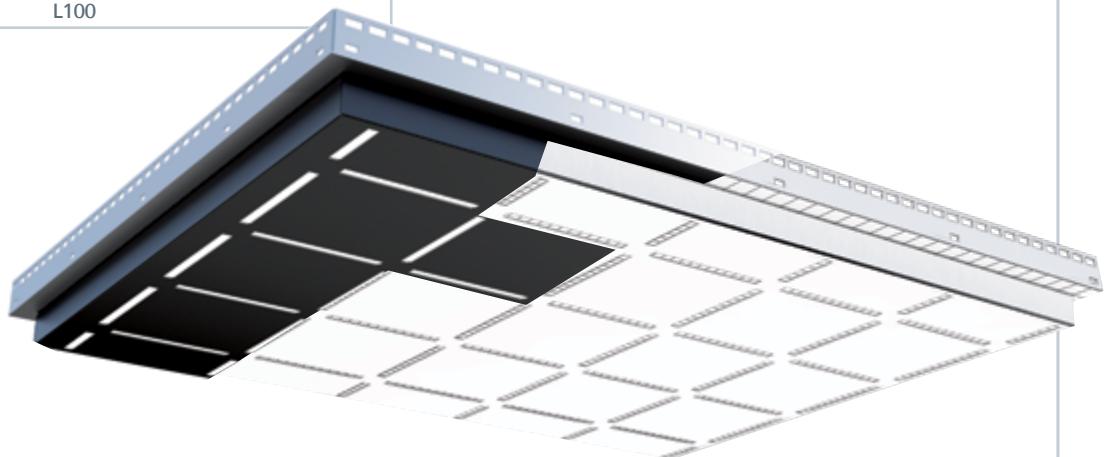
L95 (600 mm x 600 mm) fixed measurements



L100

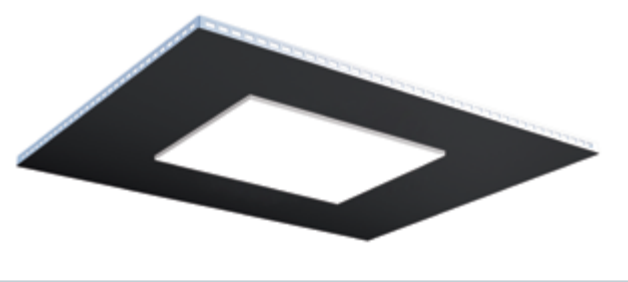
Design and eco-efficiency

Ceilings may have LED lighting. With LED technology, guaranteed service life is 2 years, meaning considerably less maintenance work.

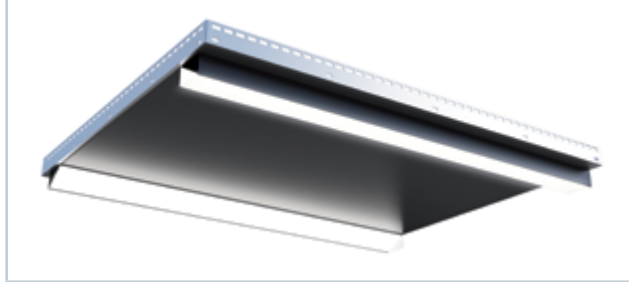


 STANDARD

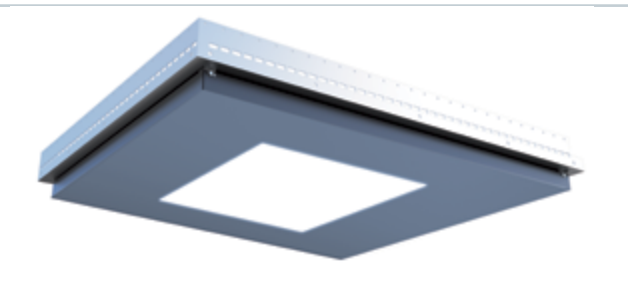
▼ H25 LIGHTING



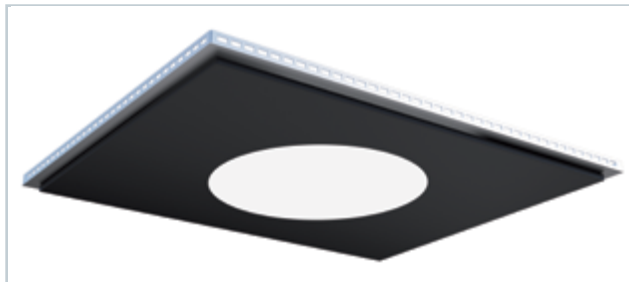
* L90 (600 mm x 600 mm) fixed measurements




L61



L97 (600 mm x 600 mm) fixed measurements



L96

 **NOTE:** In cars with grid soffits, if the width or depth exceeds 1550 mm, two grids shall be used. If the depth and width both exceed 1550 mm, 4 grids shall be used. This is not applicable to L61 lighting.

* LED plate to be fixed directly to ceiling. Available with open ceilings (painted) or with laminate lining (finishes allowed: VILITER and SUPRA).



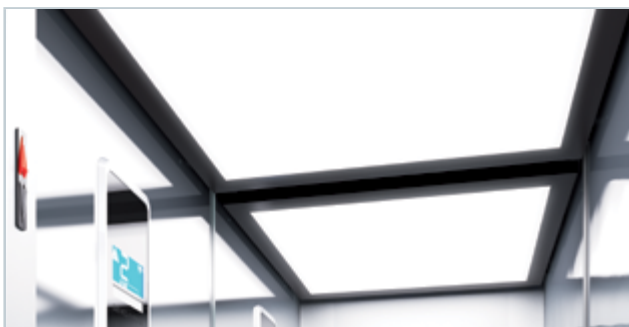
Model L21



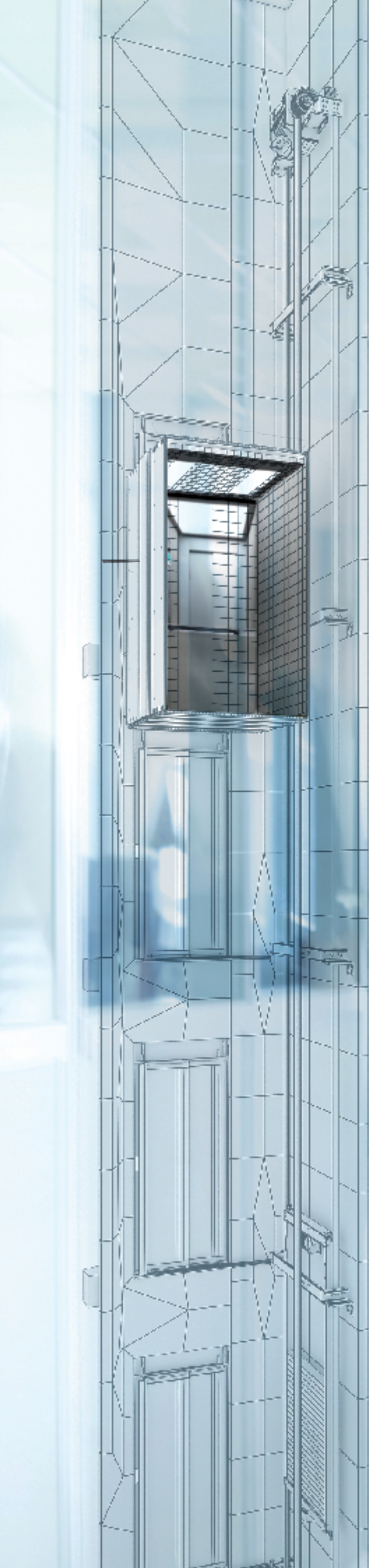
Model L40



Model L95



Model 100



Going forward together







CAR-EN-02/2020



globalNETWORK

MP ALGERIA · MP AUSTRALIA · MP AUSTRIA · MP BAHRAIN · MP CHILE · MP CHINA · MP CZECH REPUBLIC · MP FRANCE · MP MIDDLE EAST · MP THE NETHERLANDS · MP POLAND
MP PORTUGAL · MP RUMANIA · MP RUSSIA · MP SPAIN · MP SWEDEN

mplifts.com