



PASSENGER ELEVATOR
UN-VICTOR
乘客电梯

西子电梯科技有限公司
XIZI ELEVATOR CO.,LTD.

- 地址/中国·杭州市临安经济开发区科技大道2329号
- Add/NO.2329 Science and Technology Av.,
Lin'an Economic Development Zone, Hangzhou, China
- [Http://www.xizielevator.com](http://www.xizielevator.com)

本书为一般信息出版物,我们保留随时更改产品技术和说明的权利。
本书因印刷原因可能造成样本和实物有差异,以实物为准。

This book is a publication of general information, and we reserve the right to alter the techniques and specifications of the products at any moment.
Regardless of their literary meaning or implications, no liabilities shall be undertaken for any words and sentences about applications and qualities of any products in this brochure, or for definitions and alterations of any articles and clauses in the purchase and sales agreements.

XZ-1612



XIZI 西子电梯



西子联合旗下企业 领先的装备制造商

中国企业500强

公司概况:

总资产:319亿元

员工数量:1 万人

总部位于中国杭州

Leading equipment manufacturing company

Top 500 Chinese Company

Company Profile:

Total asset:31.9 billions Yuan

Number of employees:10 thousands

Headquartered in Hangzhou, China

PASSENGER ELEVATOR 乘客电梯

随着现代都市的发展,越来越多的高端场合拥有高层或多层的设计,格调奢华的环境,自然需要高端配备的电梯产品。为高端场合而生,为更多尊贵贵宾提供舒适体验而生,提升登乘者的感官体验,让乘坐者享有舒适、科技、安全的上下之旅。

With development of modern city, more and more high-end places are high-rise or multi-storey design with luxurious environment, and higher requirements are provided for elevator. improve passenger's sensorial experience and bring up-and-down movement with comfort, technology and safety.

有机房配置 MR Specification

速度范围 Speed range	1.0m/s~4m/s
载重范围 Load range	630kg~1600kg
主机 Traction Machine	VITO/GETM
门机 Door operator	Jarless-con
控制柜 Controller	U-CON
门保护 Door protection	光幕 Light curtains

无机房配置 MRL Specification

速度范围 Speed range	1.0m/s~1.75m/s
载重范围 Load range	630kg~1600kg
主机 Traction Machine	VITO/GETM
门机 Door operator	Jarless-con
控制柜 Controller	U-CON
门保护 Door protection	光幕 Light curtains



节能主机
ENERGY SAVING MACHINE

自主研发 自主生产 原厂原品牌

INDEPENDENT R&D INDEPENDENT MANUFACTURE ORIGINAL FACTORY ORIGINAL BRAND



安全可靠、节能环保

稀土永磁同步无齿曳引机，取消了传统减速箱，动力强劲，制动可靠，性能卓越，高效节能达40%以上。

SAFE, RELIABLE, ENERGY-SAVING, ECO-FRIENDLY

Permanent magnetic synchronous traction machine using rare-earth material without traditional gearbox. Powerful drive, reliable brake, excellent performance creates conversion efficiency as high as 40%.



高精度编码器

采用德国海德汉旋转编码器，控制精度更高，使电梯时刻以最佳速度曲线运行，保证安全、舒适的乘载性能。

HIGH-PRECISION ENCODER

Adopting Heidenhain rotary encoder achieving high-precision control keeps elevator running under perfect speed curve and ensures comfortable running experiences.

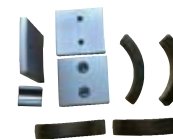


静音型抱闸

采用静音型抱闸装置，有效降噪5-10 (dB)A，使其成为一款震动更小、安全性能更高的超静音曳引机。

QUIET BRAKE

Adopting quiet brake reduces 5-10 (dB)A noise, makes it a stable, high-security quiet machine.



优质磁钢

自主生产的磁钢，技术成熟，结构稳定，耐高温达180°C，30年不退磁，能长久维持曳引机的永磁性能。

PREMIUM MAGNETIC STEEL

Self-developed magnetic steel, mature technology, steady structure, thermostable up to 180°C degree, maintaining permanent magnetic up to 30 years.

安全门机
SAFETY DOOR

自主研发 自主生产 原厂原品牌

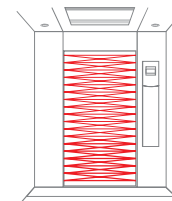
INDEPENDENT R&D INDEPENDENT MANUFACTURE ORIGINAL FACTORY ORIGINAL BRAND

安全乘梯、贴心呵护

门机系统集永磁技术、变频控制与同步带传动为一体，运行平稳、高效、低噪，拥有独立知识产权，自主设计制造，经电梯专家委员会鉴定，达到国际先进水平。

SAFE & INTIMATE CARE

Door operator with permanent magnet technology, VF control combined with synchronous belt transmission, stable operation, high efficiency, With independent intellectual property rights, self design and manufacture, identified by elevator expert committee, reached the international advance level.



防水光幕

防水等级IP65的光幕保护系统，光束数量达到154以上，抗干扰性能强，关门全过程无盲区，确保乘客进出安全。

WATERPROOF LIGHT CURTAIN

Light curtain's waterproof class IP65, the beam quantity up to 154 above, strong anti-interference performance, Closing without blind spots, to ensure passenger's safety.



防轿厢意外移动保护

当电梯处于平层位置且门未关闭时，如果电梯出现意外移动，UCMP安全装置马上启动保护，停止电梯运行。

UCMP

When the elevator is in leveling and the door is open, elevator detects unexpected move, UCMP security device immediately start protection, stop the elevator.

智能控制 INTELLIGENT CONTROL

自主研发 自主生产 原厂原品牌

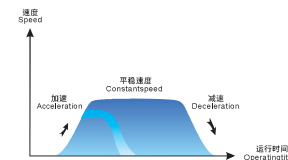
INDEPENDENT R&D INDEPENDENT MANUFACTURE ORIGINAL FACTORY ORIGINAL BRAND

精准控制、舒适运行

采用电梯专用的VVVF驱动控制与双32位CPU矢量闭环控制技术,按照人体生理适应要求,自动生成最佳速度曲线,使电梯在加减速与制动时更平稳,让乘坐更舒适,上下如履平地。

PRECISE CONTROL, COMFORT RUNNING

VVVF drive control and dual 32-bit CPU closed-loop vector control technology, automatically generating optimal speed curve according to human physiology, which can make acceleration, deceleration and braking more smoothly, provide a more comfortable running.



平层准确

智能的控制系统,能对电梯的各项运行数据和井道参数进行自学习,并自动获得最理想的运行舒适感和运行效率,同时保证最佳的平层准确度达到 $\pm 5\text{mm}$ 。

ACCURATE LEVELING

Intelligent control system can self learning the operation data and shaft parameters, and automatically get ideal operation comfort and efficiency, also ensure the leveling optimum accuracy $\pm 5\text{mm}$.

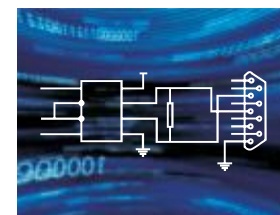


高效运行

应用先进的模块化软件系统和串行通讯技术,使电梯的控制更为可靠、高效,最大程度地缩短乘客候梯时间,有效减少因通讯故障造成的停梯、困梯事故。

EFFICIENT OPERATION

Using advanced modular software and serial communication technology, making elevator control more reliable and efficiency, greatly shorten passenger waiting time, effectively reduce the elevator accident by communication fault.





科技舒适
TECH-CONVENIENCE



语音安抚

当电梯故障时,自动播放一段语音,有效缓解乘客紧张的情绪,等待救援。同时在电梯运行过程中,提供额外语音提示,指引乘客安全乘梯。

VOICE CALM

Auto playing a voice when elevator emergency stop by fault, let the passenger calm down and waiting for rescue, Extra voice reminding during the running, guide the passenger safety loading.



西子全球鹰远程监控系统

西子全球鹰系统集远程监控、困人救援、故障报警、维保管理、故障归集,质检平台六大功能于一体,大大提高了工地问题反馈和处理速度,可及时地为客户提供安全可靠的服务。

XIZI GLOBAL REMOTE MONITORING SYSTEM

XIZI Global remote monitoring system combined remote monitoring, rescue, fault alarm, maintenance management, fault collection and inspection six functions in an organic whole, greatly improving the feedback and solve of site problem, can provide customers with safe and reliable service in time



VIP私密服务(选配)

通过VIP智能信息系统,使贵宾更有效地享有私密服务,全面保障乘梯安全。

VIP PRIVATE SERVICE (OPTIONAL)

Intelligent VIP information system, keep private and safety service for VIP.

标准装潢 STANDARD DECORATION

* 适用梯型: VC



U-CR088

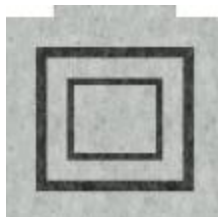
吊顶: 发纹不锈钢+喷粉钢板(无光黑)+亚克力+筒灯(分体式)
轿壁: 发纹不锈钢
地坪: PVC

Ceiling: Hairline Stainless steel+ painted steel(Matt Black)+Acrylic+downlight(Split ceiling)
Car Wall: Hairline Stainless steel
Floor: PVC

* 配分体式吊顶时, 标准轿厢净高2300mm With separate ceiling, std. Cabin clear height is 2300mm
* 配一体式吊顶时, 标准轿厢净高2400mm With integrated ceiling, std. Cabin clear height is 2400mm



U-CL037



U-FL025

标准选配 - 吊顶 Std. option Ceiling



U-CL028
发纹不锈钢 + LED光源(一体式)
Hairline st. steel + LED Lighting (Integratived ceiling)



U-CL029
发纹不锈钢 + LED光源(一体式)
Hairline st. steel + LED Lighting (Integratived ceiling)



U-CL030
发纹不锈钢 + LED光源(一体式)
Hairline st. steel + LED Lighting (Integratived ceiling)



U-CL032
发纹不锈钢 + LED光源(一体式)
Hairline st. steel + LED Lighting (Integratived ceiling)



U-CL038
发纹不锈钢 + 亚克力 + LED光源(分体式)
Hairline st. steel + Acrylic+ LED (Split ceiling)



U-CL021
喷粉框架 + 亚克力(分体式)
Painting steel frame + Acrylic (Split ceiling)

标准选配 - 地坪 Std. option Floor



U-FL004
PVC



U-FL026
PVC



U-FL027
PVC

标准装潢 STANDARD DECORATION

* 适用梯型: VR, MRL(III) MRL(T)



U-CR126

轿厢一体顶: 发纹不锈钢+亚克力+LED筒灯
轿壁: 发纹不锈钢
地坪: PVC

Ceiling integrated with car top: Hairline Stainless steel+Acrylic+LED downlight
Car Wall: Hairline Stainless steel
Floor: PVC

* 配分体式吊顶时, 标准轿厢净高2300mm With separate ceiling, std. Cabin clear height is 2300mm
* 配一体式吊顶时, 标准轿厢净高2400mm With integrated ceiling, std. Cabin clear height is 2400mm



U-CL046



U-FL012

标准选配 - 装潢 Std. option - Ceiling



U-CR129

后壁: 发纹不锈钢 + 进口贴膜钢板
侧壁: 发纹不锈钢
轿厢一体顶: 发纹不锈钢 + LED平板灯
地面: PVC

Rear Car Wall: Hairline Stainless Steel + Japanese filmed steel plate
Side Car Wall: Hairline Stainless Steel
Ceiling integrated with car top: Hairline Stainless Steel + LED Flat Panel Light
Floor: PVC



U-CR130

后壁: 镜面不锈钢 + 进口贴膜钢板
侧壁: 发纹不锈钢 + 镜面不锈钢
轿厢一体顶: 发纹不锈钢 + LED超薄筒灯
地面: PVC

Rear Car Wall: Decoration Film Steel Plate + Japanese filmed steel plate
Side Car Wall: Hairline Stainless Steel + Mirror Stainless Steel
Ceiling integrated with car top: Hairline Stainless Steel + LED Down Light
Floor: PVC

标准选配 - 装饰膜钢板 Std. Option - Decoration Film Steel Plate



FM-094



W-039

标准配置 STANDARD DECORATION

操纵箱 COP

操纵箱按钮 COP BUTTON

- BS34D(BL) 发纹不锈钢 Hairline st. steel 标配 Standard
- BR34C(BL) 发纹不锈钢 Hairline st. steel 可选 Optional

外召唤按钮 HOP BUTTON

- BS34F(B) 发纹不锈钢 Hairline st. steel 标配 Standard
- BR34D(B) 发纹不锈钢 Hairline st. steel 可选 Optional

U-CF1200

*VC: 6.4" BND
*VR: MRL(III), MRL(T): 6.4" LED
发纹不锈钢
Hairline st. steel

操纵箱 COP

操纵箱按钮 COP BUTTON

- BS34D(BL) 发纹不锈钢 Hairline st. steel 标配 Standard
- BR34C(BL) 发纹不锈钢 Hairline st. steel 可选 Optional

外召唤按钮 HOP BUTTON

- BS34F(B) 发纹不锈钢 Hairline st. steel 标配 Standard
- BR34D(B) 发纹不锈钢 Hairline st. steel 可选 Optional

U-CY100

*VC: 6.4" BND
*VR: MRL(II), MRL(T): 6.4" LED
发纹不锈钢
Hairline st. steel

U-ZW1600

*VC: 6.4" BND
*VR: MRL(III), MRL(T): 6.4" LED
发纹不锈钢
Hairline st. steel

可选装潢 OPTIONAL DECORATION

可选吊顶 Option Ceiling



U-CL005
浅灰喷粉金属框架 + 亚克力透光拱顶板+亚克力(分体式)
Grey painting steel frame + Acrylic lighting (Split ceiling)



U-CL012
喷粉钢板框架及顶板 + 亚克力(分体式)
Painting steel frame + Acrylic lighting (Split ceiling)



U-CL020
喷粉钢板框架 + 亚克力顶板 + 筒灯(分体式)
Painting steel frame + Acrylic + down lighting (Split ceiling)



U-CL016
喷粉钢板框架+弧形亚克力+亚克力(分体式)
Painting steel frame + acrylic (Split ceiling)

可选地坪 Option Floor



U-FL008
PVC



U-FL009
PVC



U-FL010
PVC

可选屏幕 Optional Display

风之舞 Wind dancing



7" TFT



4.3" TFT

红方世界 Red block



7" TFT



4.3" TFT

红色魅影 Phantom of the red



7" TFT



4.3" TFT

咖啡球 Coffee ball



7" TFT



4.3" TFT

可选扶手 Optional Handrail



U-HR001
圆拉丝不锈钢圆管
Round stainless steel



U-HR003
镜面不锈钢圆管
Round mirror stainless steel



U-HR004
长发纹不锈钢(扁扶手)
Flat stainless steel

可选装潢 OPTIONAL DECORATION



U-CR028

吊顶:喷粉钢板 + 亚克力(一体式)
后壁:发纹不锈钢 + 镜面不锈钢蚀刻
侧壁:发纹不锈钢 + 镜面不锈钢
扶手:圈拉丝不锈钢圆管
地坪:PVC

* 吊顶为下挂式,标准轿厢高度为2300mm

Integrated ceiling: Painting steel + Acrylic (Integratived ceiling)

Rear wall: Hairline st. steel + mirror etched st. steel

Side wall: Hairline st. steel + mirror st. steel

Handrail: Round st. steel

Floor: PVC

* Ceiling is hanged under car top, std. Cabin height reach 2300mm



U-CR029

吊顶:喷粉钢板 + 亚克力(一体式)
后壁:发纹不锈钢 + 镜面不锈钢蚀刻
侧壁:发纹不锈钢 + 镜面不锈钢
扶手:圈拉丝不锈钢圆管
地坪:PVC

* 吊顶为下挂式,标准轿厢高度为2300mm

Integrated ceiling: Painting steel + Acrylic (Integratived ceiling)

Rear wall: Hairline st. steel + mirror etched st. steel

Side wall: Hairline st. steel + mirror st. steel

Handrail: Round st. steel

Floor: PVC

* Ceiling is hanged under car top, std. Cabin height reach 2300mm



U-CR030

吊顶:喷粉钢板 + 亚克力(一体式)
后壁:发纹不锈钢 + 镜面不锈钢蚀刻
侧壁:发纹不锈钢 + 镜面不锈钢
扶手:圈拉丝不锈钢圆管
地坪:PVC

* 吊顶为下挂式,标准轿厢高度为2300mm

Integrated ceiling: Painting steel + Acrylic (Integratived ceiling)

Rear wall: Hairline st. steel + mirror etched st. steel

Side wall: Hairline st. steel + mirror st. steel

Handrail: Round st. steel

Floor: PVC

* Ceiling is hanged under car top, std. Cabin height reach 2300mm



U-CR031

吊顶:喷粉钢板 + LED筒灯 + 亚克力(分体式)

后壁:和纹不锈钢

侧壁:和纹不锈钢

地坪:PVC

Ceiling: Painting steel + LED Lighting + Acrylic (Split ceiling)

Rear wall: Irregularly-lined stainless steel

Side wall: Irregularly-lined stainless steel

Floor: PVC



U-CR078

吊顶:发纹不锈钢 + 亚克力 + LED筒灯(分体式)

后壁:发纹不锈钢 + 发纹不锈钢嵌条 + 镜面不锈钢

侧壁:发纹不锈钢 + 发纹不锈钢嵌条 + 镜面不锈钢

踢脚线:发纹不锈钢

地坪:PVC

Ceiling: Hairline st. steel + LED Lighting + Acrylic (Split ceiling)

Rear wall: Hairline st. steel + mirror st. steel

Side wall: Hairline st. steel + mirror st. steel

Skirting line: Hairline st. steel

Floor: PVC



U-CR114

吊顶:发纹不锈钢 + 亚克力(分体式)

后壁:发纹不锈钢 + 发纹不锈钢嵌条 + 镜面不锈钢

侧壁:发纹不锈钢 + 发纹不锈钢嵌条 + 镜面不锈钢

扶手:镜面不锈钢圆管

地坪:PVC

Ceiling: Hairline st. steel + Acrylic (Split ceiling)

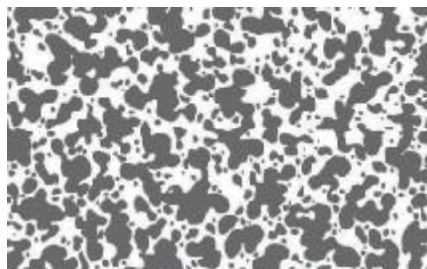
Rear wall: Hairline st. steel + mirror st. steel

Side wall: Hairline st. steel + mirror st. steel

Handrail: Round mirror st. steel

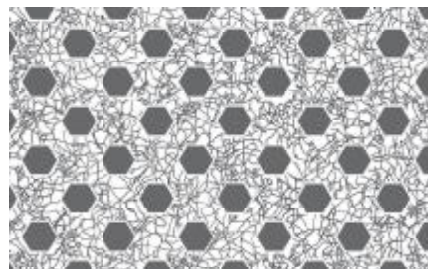
Floor: PVC

可选蚀刻 OPTIONAL ETCHING



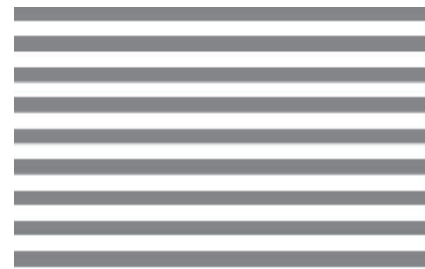
■ 凸面 □ 凹面

XIZI - 04



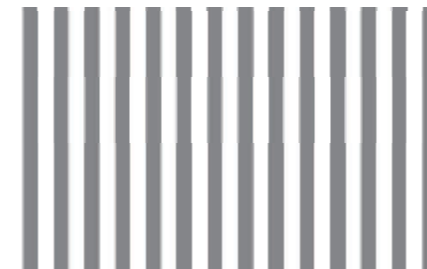
■ 凸面 □ 凹面

XIZI - 10



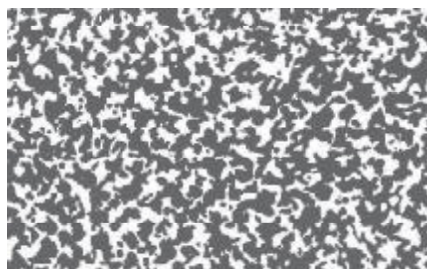
■ 凸面 □ 凹面

XIZI - 81 (横)



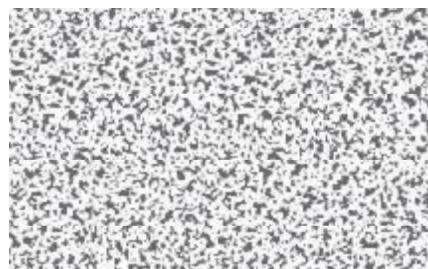
■ 凸面 □ 凹面

XIZI - 81 (竖)



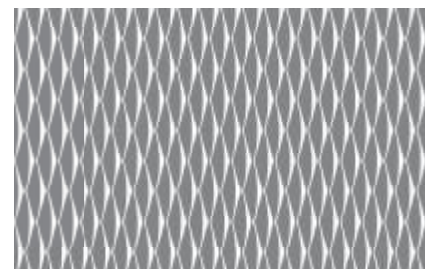
■ 凸面 □ 凹面

XIZI - 37



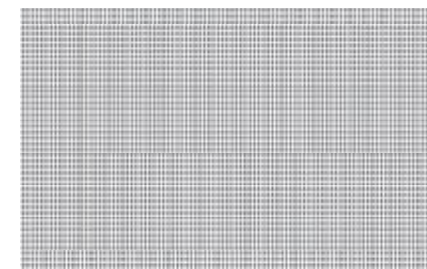
■ 凸面 □ 凹面

XIZI - 40



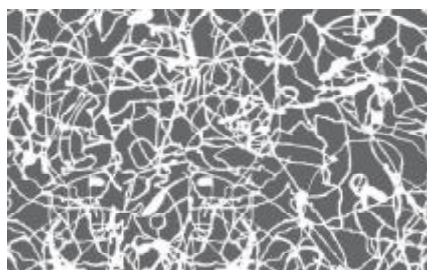
■ 凸面 □ 凹面

XIZI - 89



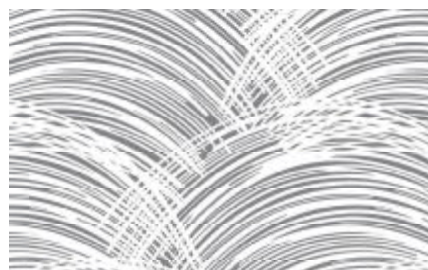
■ 凸面 □ 凹面

XIZI - 90



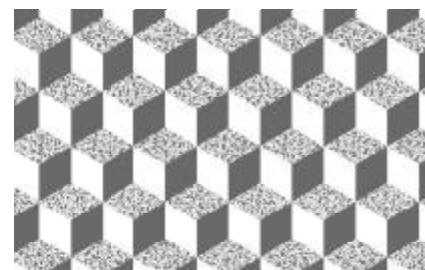
■ 凸面 □ 凹面

XIZI - 75



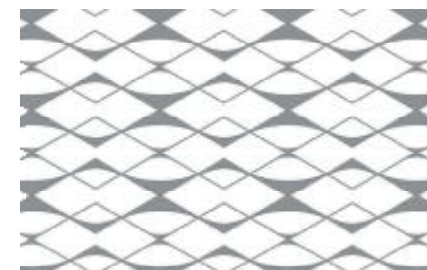
■ 凸面 □ 凹面

XIZI - 76



■ 凸面 □ 凹面

XIZI - 105



■ 凸面 □ 凹面

XIZI - 15

整梯功能表 FUNCTION LIST

乘客公共安全 Public safety of passenger		C/R	MRL (III) /MRL(T)
光幕门保护 Light Curtain Protection	当轿厢轿门中间有东西阻挡时,导致光幕安全触板动作,电梯就会开门。光幕保护在消防操作时不起作用。光幕防护等级IP65。 Light Curtain acts if there is any obstruction between door panels, the door will be reopened. This function will not be available during fireman's operation. Class of light curtain protection: IP65.	●	●
防捣乱功能 Anti-Nuisance Car Call Protection	当电梯处于轻载状态时,轿厢指令数达到或超过设定值时,系统将消除所有指令。 If there is only one passenger in the car, and an excessive number of call calls is registered, nuisance is detected and all car calls will be cancelled, requiring registration of proper calls.	●	●
满载报警 LNS- Load Non Stop	当轿厢内载荷达到满载报警值时,即进入满载报警状态,电梯将不再应答厅外召唤而直接响应轿内指令直达指定楼层。 When a car is loaded to a predetermined percentage of its capacity, it is considered "full". The car will bypass further hall calls. Additional passengers would be unable to enter.	●	●
超载保护 LVS-Overload Protection	当轿厢的载重量超出额定允许的载重时,超载蜂鸣器会以提示超载,此时显示超载,轿厢不开门,电梯不启动。 If the load exceeds the rated load, the sound signal will be given out by speaker, and "OVERLOAD" will be displayed, the car door will not close, the elevator will not start.	●	●
按钮粘连保护 Button anti-adhesion protection	当按钮由于机械原因粘连时,电梯屏蔽该按钮,不响应该按钮的指令。 If adhesion on a button due to mechanical fault, elevator will shield the button and no longer respond the order from this button.	●	●
门区二次防夹功能 Door closing torque protection	门机设定力矩检出功能,在平层时在设定力矩下不再提升力矩。 Door operator had set the closing torque, in case of jamming over the torque, the door will not close by improving the torque.	●	●
轿内紧急照明 ELTU-Emergency light	在轿内设置的紧急照明装置,停电时启用。 Emergency light in the car will start whenever there is power cut.	●	●
轿内警铃 ALAR-BAlarm Bell	供在特殊情况下乘客通过按动轿厢内报警按钮,及时通知外界。 An alarm sound signal will be given out to the outside in specific conditions.	●	●
关门超时保护 DTC-Door Time Protection Close	当电梯由于机械卡阻等原因导致不能关门到超过规定时间,电梯重复三次关门后,未检测到关门信号,电梯会自动进入保护状态,当电梯监测到门已正常关闭时,电梯将恢复正常操作。 If the car door does not close completely within an adjustable time after the door close command, after three unsuccessfully retries, the elevator will automatically enter protection state. When normal door closing is detected, elevator will recover to normal running.	●	●
开门超时保护 DTC-Door Time Protection Open	当电梯由于机械卡阻等原因导致不能开门到超过规定时间时,内外呼信号会自动取消,驶向相邻层楼开门并释放乘客。 If a car door does not open completely within an adjustable time after the door open command, car call and hall call signals will be automatically cancelled, and elevator will stop at the next floor and open its doors.	●	●
双门扇重力锁紧 Door panels forced closing upon gravity	当厅门门扇钢丝绳失效时,重力锁会锁紧,副门扇强制合拢。 If hall door connecting wires fails, gravity will force the main panel and auxiliary panel closed.	●	●
终端超速保护 NTSD-End Protection	电梯的上下终端都会装有终端开关和终端限位开关,以保证电梯不会超越行程。 Both upper and lower terminals of elevator are equipped with terminal speed reducing switch and terminal limit switch, if the speed is not slowed to the preset value while the car reach the end floor, a forced deceleration will be carried out by system in order to protect the safety of the car.	●	●
消防功能 EPO-Emergency Fireman Operation	消防功能启用后,电梯返回消防层楼,开门救人,并停止运行。 Upon recognition of fireman's service, a car shall return non-stop to the designated return landing and park with the doors fully open.	●	●
消防反馈 Fire feedback	当电梯完成消防运行后,系统回传一个完成信号,方便楼宇系统接入。 When fireman operation finished, a signal will be feedback to facilitate access to building system.	●	●
就近平层 Local leveling	当电梯出现意外故障时,电梯记忆楼层,在恢复运行后,无须进行端站层楼复位,提高运行效率。 If accidental fault occurs on elevator, current floor will be memorized, so that for recovery it's no need to return to terminal landing, improves running efficiency.	●	●

停电应急平层 AREL-Automatic Rescue Device	当由于大楼停电导致运行中的轿厢不在门区而困人时,停电应急平层装置就会启动,驱动电梯就近低速运行到门区并开门。 This device is used for rescue operation in case of power shutdown, it is powered by a rechargeable battery, when a sudden power cut happens, the car will move towards to the near floor, keep the door open to the passengers.	○	○
地震操作 Earthquake operation	配有地震操作功能时,如果发生地震,地震检测装置动作,该装置有一个触点信号输入到控制系统,控制系统控制电梯就近停靠,而后开门放客等候,地震检测装置客户自理。 With this function, in case of earthquake, earthquake detector acts and inputs a contact signal to control system which drives elevator to near floor, open door to release passengers and stop.(Earthquake detector shall be solved by customer)	○	○
封层防夹速功能 Core closing anti-stall function	当电梯停止运行后,电梯闭环封层电路,闭合线圈在切割永磁体的磁力线时产生电流过程中产生反向力矩,避免电梯由于制动失效时,电梯失速。 When elevator stops, it will start core closing circuit. During current producing for cutting line of magnetic force of permanent magnet, opposite torque is produced to avoid stall due to braking failure.	○	○
门区外开门禁止 Door opening prohibition outside door zone	为安全起见,在门区外,系统设置不能开门。 For safety, door opening is disabled outside door zone.	●	●
光幕与安全触板保护 Light sensor and safety edge protection	用反应可靠的机械式挡板和灵敏的红外光束的双重探测作用,为乘客出入轿厢提供安全保障。 Light sensor and mechanical safety edge can be option.	○	○
故障自诊断 Fault self Diagnosis	当控制系统检测到回到控制回路的异常时,自动停梯保障乘客的安全。 When control circuit abnormal is detected, automatic stop the elevator to ensure the safe of passenger.	●	●
防犯罪保护 ACP-Anti Crime Protection	功能启用时,电梯将在经过预先设定楼层后开门接受检查。 Anti-Crime Protection forces each car in the group to stop at pre-determined floor and open its door. This allows a security guard at the floor to visually inspect the passenger of the elevator before the car completes its run.	○	○
紧急消防员服务 EFS-Emergency Fireman's Service	当轿厢内预装的钥匙开关被启动时,电梯取消所有召唤信号,电梯只能应答轿厢内指令,配合消防消防员灭火,此功能配合消防电梯使用。 EFS shall automatically place the car on independent service when the pre-set key is started, all calls cancelled, only answer the car call inside to cooperate the fireman, this function need to match with the fire lift.	○	○
消防状态键显示 Fire display	进入消防状态时,在轿内显示提示信息。 There is display inside of the car when the lift enter into fireman operation.	●	○
密码楼层服务 Password Floor Service	密码楼层服务可以利用轿内按钮设定密码对大楼内特定层楼进行权限管理,对大楼内人员的出入进行管理。 The special floor can be set the password through the button in car.	○	○
紧急电源操作 EPO-Emergency Power Operation	断电时,电梯转到接到客户的应急电源后,群集中的电梯轿厢逐一运行到指定(或下一层)层站,门打开,放出乘客,并根据用户的需要,可指定群集中的某些电梯处理正常服务运行;电源正常后,所有电梯自动恢复到正常运行状态。 In case that regular power supply shuts down, the power supply of cars turns to Emergency Power, then cars in group except cars in inspection mode run to defined landing/or next landing/one by one. After arrival to rescue position, the cars open doors and let passengers out. It's available to define a part of cars in group for normal service during EPO which is needed by some users. The return to full normal operation is done automatically when regular power supply is reestablished.	○	○
手动应急疏散装置 HSD-Hand rescue device	当电梯断电乘客被困时,可采用手动操作来使电梯平层,并安全可靠地使乘客安全脱离。 When power failure, car leveling the elevator and release the passenger manually through this device, be sure about the safety.	(-)	●
电梯基本功能 Elevator basic functions		C/R	MRL (III) /MRL(T)
层楼显示 Floor Display	为方便乘客了解电梯的运行方向,在轿内操纵盘和厅外召唤面板上有箭头状指示灯提示运行方向。 There is arrow display in COP and HOP to show the running direction to passengers.	●	●
全集选 FCL-Full Collective Operation	电梯对大楼内上、下所有信号,轿内选层指令及各种信号进行综合分析判断后,将自动优先与电梯运行方向一致的信号进行依次应答。 All car and/or hall calls registered are answered in the order in which the landings are reached. Direction of travel will be established by the first car command/hall call registered. All calls on its way will be served, irrespective of the time sequence in which the calls were registered.	●	●

司机功能 ATT-Attendant Service	通过操作操纵箱内开关进入司机操作状态,可由司机对轿厢乘客数量、厅外呼梯响应、开关门等进行管理。 The Attendant Operation feature allows semi-automatic operation with manual control through the switch in COP.	●	●
司机直驶 Attendant Bypass	进入司机状态后,按下操纵箱内NSB按钮,电梯不响应外召,直接驶向目的楼层。 In state of attendant operation, if the button NSB in COP is pressed, elevator will not answer to hall call and directly run to destination floor.	●	●
司机友好提醒 Reminding for Attendant	当电梯处于司机运行状态时,外部召唤登记便对应指令灯进行闪烁,提醒司机人员了解召唤的登记情况(此功能和司机功能一起工作)。 When hall call is registered under ATT, corresponding command lamp will flash to remind attendant to learn situation of such registration. The function acts together with ATT.	●	●
VIP独立服务 VIP Independent Service	为VIP乘客提供的一项特殊功能,使得VIP乘客可以以最快的速度到达目的楼层。 This function is designed for meeting VIP's special needs. When switched on independent service the elevator will only answer the registered car call regardless of the hall calls while opening or closing the door by manual control and operating according to VIP's registered signals.	●	●
错误指令取消 CBC-Cancel Error Calls	乘客按下指令按钮响应后,发现与实际要求不符,可在指令登记后连续2次错误指令的按钮,该登记的信号就被取消,该功能可通过参数开闭。 Before the car starts, the registration of a car or operation can be canceled by double click of this button. After the car starts, registration cannot will not allowed for the sake of passengers safety. The function can be made available by parameter setting.	●	●
反向指令自动消除 Automatic elimination of reverse command	当电梯到达顶层站将反向时,如果所有后序登记的指令全部消除。 When the first or last landing is reached and elevator has to reverse, all commands originally registered will be eliminated.	●	●
本层厅外开门 Door Re-opening	在正常关门过程中,厅外与电梯同向的召唤按钮被按下时,电梯将重新开门。 During normal door closing, when call button that indicates the direction consistent to current running direction is pressed in hall, door will be re-opened.	●	●
开门按钮开门 Door opening	电梯停在门区时,可以在轿厢中按开门按钮使电梯已经关闭或尚未关闭的门重新打开。 When elevator stops in door zone, opening button can be pressed in car to re-open full or partly closed door.	●	●
开门保持功能 DHB-Door Hold Button	在需延长开门时间时,可透过按操纵箱面上的开门保持按钮维持设定的开门时间。 Can adjust the door open time through the DHB on the COP when need to hold the door opening.	○	○
基站锁梯 Locking at main landing	电梯进入锁梯状态,返回基站,停止使用。 When locking switch is set, elevator back to main landing, stop using.	●	●
盲文按钮 Braille Button	指令按钮带有盲文标识,方便盲人乘客操作。 Push button with braille, convenient for the blind.	●	●
语音报站 Voice Announcement	系统在配有语音报站功能时,电梯在每次平层过程中,语音报站系统将报出即将到达的楼层,在每次开门前,报站将会预报电梯下去运行的方向等。 With the function, voice announcer announces floor to be reached on each landing, and forecast subsequent running direction before each door closing.	○	○
轿厢智能IC系统 IC card system	IC卡管理功能通过轿厢内和厅外读卡系统对特定楼层进行权限管理,对人员出入电梯进行智能管理,此功能仅对电梯有效不能与大楼其他IC卡管理集成。 IC card management implements right management for specific floor through car and hall card reading system, intelligent manage the passengers. The function is only effective for elevator and can't be integrated with other IC card management system in building.	○	○
误差再平层 RLEV-Releveling Operation	当由于进出乘客等原因引起负载变化使轿厢地板与层门地坎的误差超过一定值时,电梯将会自动执行再平层,使轿厢回到准确平层位置。 Stopping error between the car sill and landing sill exceeds a limit due to load changing of passenger shall be corrected by automatically releveling.	○	○
增效提前开门 ADC-Advanced Door Opening	当电梯运行接近门区位置时,在符合安全的前提下,电梯会提前开门并低速启动运行至平层位置,提高电梯运行效率。 In order to accelerate traffic, automatic door opening starts while the elevator car approaches a landing.	○	○
基站开门待机 Door opening for standby at main landing	当用户选择该功能时,电梯在无人使用时,将在基站开着门等待乘客。 With the function, when elevator is not used, it will wait with door opened at main landing.	○	○
访客访问 Visit	当有客人来时,需要客人进行电梯开放。(此功能能和楼宇系统、智能IC系统一起配套进行使用) The function is to open elevator for visitor. (The function acts together with building system and intelligent IC System)	○	○
厅外到站钟 Hall Arrival Gong	选配该功能时,每一层的厅外都装有上、下到站钟,用以告诉乘客该电梯即将到站。 Up/Down arrival gong will be provided in hall on each landing to inform passenger of arriving of elevator with this optional function.	○	○
轿内到站钟 Car Arrival Gong	在电梯减速平层过程中鸣响轿内的到站钟,以提醒轿内乘客和厅外候梯乘客电梯正在平层,马上到站。 During speed reduction and leveling, arrival gong on car top sounds to inform passengers and waiters of leveling and arriving.	●	●

副操纵箱操作 Auxiliary Operation Panel	在主操纵箱的同时,还可选配副操纵箱,乘客可以通过副操纵箱登记指令和门操作。 Auxiliary Operation Panel can be provided in addition to main operation panel, passenger can register and door operation via auxiliary operation panel.	○	○
残疾人操纵箱操作 Operation Panel for handicapped	电梯可选配残疾人操纵箱,供残疾人进行特殊操作。 Operation panel for handicapped can be selected for special operation by handicapped.	○	○
自动返回基站 Automatic return to main landing	全自动运行时,如果设定自动返基站功能有效,当梯群中无指令和召唤时,电梯在一定时间(时间可通过参数设置)延迟后自动返回基站。 With this function, when there is no order or calls, after a period of time the elevator will automatic return to the main landing.	●	●
机房隔音减震装置 Machine room sound insulation and shock absorber	机房承重装置下专有特殊材质的隔音减震装置,降低轿厢和顶层大厅的噪音。 There is sound insulation and shock absorber under the machine bearing, to reduce the noise between cabin and top floor.	○	(-)
轿内照明,风扇自动控制 FLP-Fan and light protection	在没有接到任何操作指令的情况下,电梯在关门后的预定时间内,将进入节能模式,关闭轿厢内的照明和风扇,但在接到系统指令后,重新启动风扇和照明。 Elevator will enter energy saving mode under no operation, turn off the car light and fan automatically within present time after door closing and resume after new command is received.	●	●
自动泊梯 PRK-Parking	群控区内电梯在大楼内所有电梯均处于空闲状态时,会自动停泊于大楼的不同楼层以提高电梯组对召唤的响应速度。 Elevator in same group will park on different floors once spare in order to shorten the response time.	○	○
开、关门按钮 OCB/O-CB-Door Open/Close Button	电梯轿厢操纵箱上设有控制开关门的按钮,以便乘客根据需要灵活选择开关门的时间。 The door open/close button in car operation panel permits to open/close an automatic door, and to keep it open/close by constant pressure.	●	●
开、关门按钮灯 OCBL/O-CBL-Door Open/Close Button Light	按下开、关门按钮的同时将点亮按钮灯以提示成功应答。 Door Open/Close button will be highlighted if the buttons are pressed.	●	●
餐厅等待 CFT-Cafeteria Time	为大楼餐厅所在的楼层分配较长的开门时间,以满足额外的客流量。 More open time for the cafeteria floor to meet with the requirement of the extra passenger flow.	○	○
厅、轿门分别控制 DHT of car and landing door	经过统计由厅外有召唤引起的开门等待时间会比由轿厢内引起的开门等待时间要长,此功能通过独立调整电梯在厅召唤和指令时的厅门保持时间,来适应实际的运行效率。 The waiting time caused by hall call is longer than car call according to statistics, this function to improve the efficiency through independent adjust the door open holding time.	●	●
关门等待取消 ADC-Advanced Door Closing	自动状态下,在门保持开启状态并且处于开门延时阶段时,按关门按钮可立即执行提前关门。 When the door is fully open and under the door hold period on normal running, push the door close button can close the door in advance.	●	●
启动时力矩补偿 Torque compensation on starting	为使电梯启动时获得更好的舒适度,系统对轿厢内数据进行计算,并通过启动时的力矩补偿给平优化。 To make the elevator more comfortable, system calculate the load in car, optimize it through compensating the torque on starting.	●	●
数字式大厅轿内显示 Digital Display in Car and Hall	在轿内的操纵箱面板及每层楼的大厅召唤盘上显示用显示电梯所在层站,以便乘客了解电梯当前运行位置。 16 digital display to show the position of elevator in COP and HOP.	●	●
上、下交通高峰服务 MIT&MOT-Moderate Incoming&Outgoing Traffic	专门用来缓解大楼内的交通高峰,在上高峰或下午高峰时,所有投入服务的电梯在大厅的载客量达到预设值(一般为50%)后,就立即启动运行,并在高峰期间一直保持低速运行。(该功能仅对并建及群控有效,群控无效) Aiming at relieving the traffic peak in the building, for example, morning peak or evening peak, all the elevators on service at lobby will be activated once the load reached a predetermined value(generally 50%), and this model will continue at the predetermined peak times.(this function only available to triplex and group control).	○	○
多媒体显示 TFT Display	多媒体显示可播放用户指定的音频和视频。 TFT Display can show the video or music ordered by customer.	○	○
轿内LCD显示 LCD display in car	利用液晶显示器作为轿厢轿内显示。 Car display is LCD.	●	●
过站提示 Over Station Warning	电梯过站时通过蜂鸣器向乘客提示层站通过,为盲人等特殊乘客提供服务。 Elevator will remind the passenger through buzzer over station, provide special service for blind passenger.	○	○

定时开关机 Time Setting	启/止功能后电梯将实现定时开关机,对电梯检修进行自动控制。 Time setting to auto control the elevator.	○	○
控制柜隔音 Controller Insulation	在控制柜的接触器外,加装静音盒或采用静音接触器,以降低噪音。 Add the mute box over the contactor or use silence contactor to reduce the noise.	┌─	●

语音安抚功能 Voice Clam	当电梯在轿时,超载,出现故障接近平层或开门过程中时,会自动播报语音对乘客进行安全引导,给出温馨提示。 Overtime, overload, fireman operation, and leveling to nearest floor under fault, or open/close the door, automatic voice announcement will be played to clam and guide the passenger.	●	●
----------------------	--	---	---

系统安全 System Safety	C/R	MRL (III) /MRL(T)
--------------------	-----	-------------------

安全接触器触点检测保护 Contact detection and protection on safety contactor	系统检测安全继电器,接触器触点是否可靠动作,如发现触点的动作和线圈的驱动状态不一致,将停止轿厢一切运行。 The system detects reliable action of safety relay and contact on contactor. If nonconformity of action of contact with driving state of coil found, any work in car will be stopped.	●	●
抱闸反馈检测功能 Brake Feedback & Detection	对抱闸继电器信号进行全程监控,当发现抱闸继电器的实际状态与给定的命令不符时,停止运行。 Brake relay signal is always monitored. If nonconformity of actual state of brake relay with preset command is found, running will be stopped.	●	●
独立双制动器 Independent dual brake	驱动主机采用独立的制动器。	●	●
运行时间限制器 Running Time Limiter	当电梯运行过程中,如果连续运行了运行时间限制器规定的时间(最大 45 秒)发现平层开关没有动作,就停止轿厢一切运行。 If leveling switch doesn't act after continuous running for time specified by running time limiter(max. 45s), any work in car will be stopped.	●	●
超速保护 Overspeed Protection	当速度超出控制范围的运行导致的安全问题而设置的保护。 The function is to protect elevator against safety problem caused by running at speed out of control range.	●	●
低速保护 Low Speed Protection	为防止电梯在控制范围外低速运行导致安全问题而设置的保护。 The function is to protect elevator against safety problem caused by running at speed lower than control range.	●	●
主机过热保护 OHT-Overheat Protection	由于机壳温度过高或运行发热,电动机温度超过预设值时,电梯将自动进入保护状态,电梯就近停车,并打开安全泄放泵关闭轿厢内照明电话,争速度正常后,电梯恢复正常运行。 Self-protection mode will be achieved if the temp of the motor exceeds the preset value due to the heat made by motor itself or the high temp in the environment. The car stops at the nearest floor, unload and shut down the light and ventilation device, once the temp falls down to normal, the car will recover.	●	●
安全回路故障保护 Safety circuit fault protection	系统收到安全回路故障信号就紧急停车,并在有故障时防止电梯运行。 When safety circuit fault signal is received, elevator will be subject to emergency stop, and prevented from running under fault.	●	●
主控CPU WDT 保护 Main control CPU WDT protection	主控板上设有 WDT 保护,当检测到 CPU 故障或程序有故障时,WDT 回路强行切断主控制器输出点,并使 CPU 复位。 WDT protection is provided on main control board, When fault of CPU or program is detected, WDT circuit will forcibly disconnect main controller output point and reset CPU.	●	●
电网波动监测功能 Grid filter monitoring	在一段时间内,如果电网电压出现连续波动,系统将自动报警。 If the voltage fluctuate continuously in one period, system will auto alarming.	●	●
速度反馈检测功能 Speed Detection	系统一旦检测到实际速度与给定速度不符,将自动断开安全回路并发出警报。 Once the system detect the actual running speed is unconsformity with the preset speed, will shut off the safety circuit automatically and alarming.	●	●
重新初始化运行 RN-Reset initialize	当电源因中断而恢复后,电梯位置信号未能保留或不能确定轿厢位置时,电梯将驶向基站重新定位,定位后位置显示器显示电梯所在的位置位置,并恢复正常运行。 When the power recovered from a cut, position signals cannot be given or the position cannot be detected the car will move to lobby and reinitiate. After that the floor info can be displayed and the elevator backs to normal.	●	●
恢复运行 Recover Running	当电源中断而恢复后,电梯处于平层区域以外,系统将自动低速运行至平层位置,进入平层后,门自动打开恢复正常运行。 Elevator recover from shut off if it's out of the leveling zone, the system will running to the leveling position under lower speed, and auto open the door to recover.	●	●

保养安全功能 Maintenance Function	C/R	MRL (III) /MRL(T)	
五方通话 Five Parties Intercom	用于在特殊情况下通过设置在轿厢维保室、轿顶、底坑的对讲装置保持与机房及监控中心的语音联系(用户提供机房到监控室的电缆)。 The function is keep contact with machine room and monitoring center via intercom system provided on COP, Car top and pit. Cable from machine room to monitoring center shall be solved by client.	●	●
层楼自主学习 Floor Height Self-learning	电梯层楼高度进行自动的学习。 Elevator automatically learns the floor height.	●	●

绝对位置自定位 Self positioning of max. Torque	每次断电恢复后,重新运行最大力矩的绝对位置定位,确保电梯运行高效率状态。 After each power failure recovery, elevator re-establishes the absolute position of max. Torque point to ensure running in high efficiency state.	●	●
机房安全配电箱 Machine Room Distribution Box	对电梯上电、断电进行控制并实现断电上锁功能,使维保人员有效控制电梯,对过载和短路进行保护。 The device controls connection and disconnection of power supply, and supports locking after disconnection of power supply. With the device, maintainer can effectively control elevator and protect elevator against overload and short circuit.	●	┌─
底坑检修梯 Pit Ladder	在底坑里方便维修人员进出的攀登梯。 Ladder is provided in pit for maintainer.	●	●
故障历史记录/参考 Fault Recording/Reference	可记录 20 条最近的故障,包括发生时间、楼层、代码。 The latest 20 faults can be recorded, including the fault time, floor and code.	●	●
轿顶检修功能 TCI-Top of Car Inspection	电梯轿顶设有检修箱,使检修维护更为安全便捷。 Inspection box is provided on the top of car, safer and easier for maintainer.	●	●
机房检修 Inspection in Machine Room	机房内进行检修运行操作。 Inspection running can be carried out in machine room.	●	●
平层微调 Leveling Adjustment	当电梯平层略有差异时可以通过人工进行干预。 If there's slightly deflection in elevator leveling, manual intervention can be implemented with the function.	●	●
试运行 Test Running	这是为测试或考核新梯而设计的功能,将一体机某个参数设置为试运行时,电梯就会自动运行,自动运行的总次数和每次运行的间隔时间可通过参数设置。 The function is designed for testing or examining new elevator. Elevator can automatically run after some parameter of A/C is established as state of test running. Total times of automatic running and interval between runs can both be established by parameter setting.	●	●
全井道双控照明 Full Shaft Double Control Lighting	整个井道壁上安装等距的方式设置有双控照明。 Double-control lighting is provided by installing lamps through shaft wall.	●	●
厅门手动开门强制确认功能 Force Confirmation of Landing Door Manual Opening	当手动开门时,第一步只能解开一条锁,在确认门回关后才能彻底完全打开。 For manual opening, door can only be opened by a seam firstly, and can full open if opening is confirmed.	○	○
轿厢锁紧装置 Cabin Locking Device	在保养电梯时,可用该装置把轿厢锁紧在导轨上来作为操作平台,利于安装或维修保养。 With this device, can lock the cabin on the guide rail during maintinair, easier for installation and maintenance.	┌─	●

升级 Extension Function	C/R	MRL (III) /MRL(T)
-----------------------	-----	-------------------

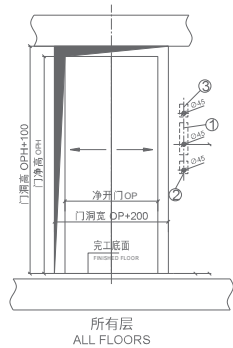
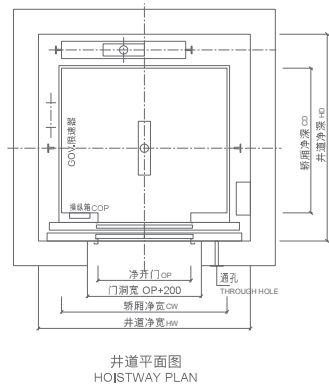
特殊字母显示 Special Letter Display	通过手持操作器可以设置每一层楼显示的字符,如设置地下一楼显示“空”等。 Character shown on each floor can be set via manipulator. For example, shown B for Base Floor.	○	○
群控 Group Control	用于两台或两台以上同型号电梯成组控制时使用,使群控能自动选择最合适的应答,避免电梯重复停梯,缩短乘客候梯时间,提高运行效率。 Used for two or over two elevators, response with the optimize solution, avoid the repeat stopping, save the waiting time of passenger, increase the efficiency.	○	○
楼宇电梯监控接口 BA-Building Monitor Ports	电梯可以为用户的大楼智能管理系统提供离散型电梯运行状态信号,主要信号为:运行方向、楼层信息、安全信号等。 Elevators with BA function can provide scattered elevator status for computed management of the building, such as running directions, floor numbers, safety signals, door signals.	○	○
电梯远程监控系统 REM	可通过互联网或布设线路实现远程监控中心对用户电梯的 24 小时全程监控,电梯发生故障或关人时,会自动实时向中心报警。 24 hours Remote elevator monitoring can be implemented through Internet or telephone line. Auto alarming to REM center when elevator faulty.	○	○
小区域提醒 AMS-Area Monitoring Screen	可以安装在大楼或小区的值班室,以 LED 指示灯的方式,简单显示电梯的运行状态,执行解锁操作。 It can be installed in the porter's lodge, simply display the condition signals by LED indicators and lock/unlock the elevator.	○	○
电梯专用空调 Air Condition	专门针对轿厢内空气调节设计,为独立循环系统,通过冷凝水自动雾化,雾化水位自动切换工作方式及水位检测保护,空气净化等功能调节,保持轿厢内空气清新、舒适,净化除菌空气湿度等参数保持在人体舒适的范围之内,营造轿厢内清新空气。 Adjust the air in cabin, including temperature, humidity and cleanliness, to make a comfortable environment.	○	○
紫外光杀菌 UV Sterilization	杀菌系统通过对进入轿厢的空气进行消毒灭菌,对进入轿厢的空气达到有效的净化。 UV Sterilization system clean the air into the cabin.	○	○
负氧离子杀菌 Negative oxygen ion bactericidal	通过对轿厢通风系统增加负氧离子发生器,来制造活性氧离子,对空气具有杀菌及净化的作用,无时无刻地为乘客带来清新空气,尊享绿色健康。 Add the negative oxygen ion generator to the ventilation system, sterilization and purification of the air in cabin.	○	○

上述功能仅适用于 UN-VICTOR T 标准配置的电梯
Above functions only apply for std. configuration of UN-VICTOR T

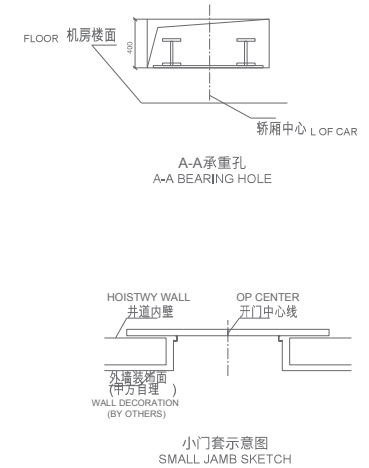
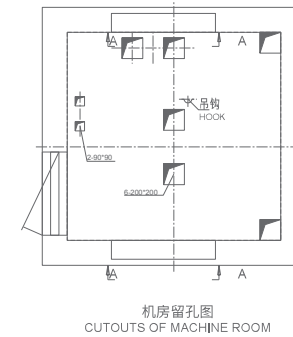
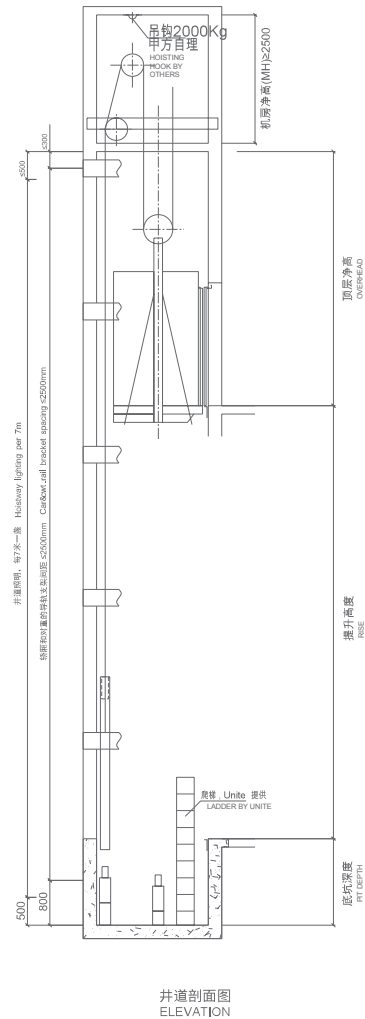
● 标准配置 Standard configuration ○ 选项配置 Configuration Options ┌─ 无此配置 No configuration

UN-Victor (C)(R) 土建图 (1-2.5m/s)

UN-Victor (C)(R) layout drawing



- 按钮与显示
 - 基站盒、仅基站设置
 - 消防开关 (如有消防功能), 仅基站设置
- 建议用户采用内径φ45的PVC管预留走线留孔
1.Button & display
2.Fire switch(if with EFO) only on base floor
suggest client use PVC tube of 45mm inner diameter

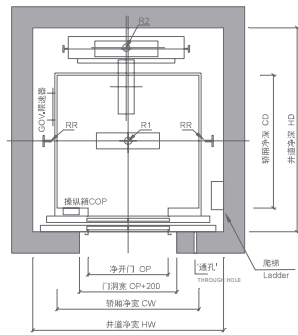


载重(kg) Loading Capacity	速度(m/s) speed	轿厢净尺寸(mm) 宽(CW) x 深(CD) Cabin size(net)	净开门尺寸(mm) 宽(OPW) x 高(OPH) Open size	井道净尺寸(mm) 宽(HW) x 深(HD) Hoist way size(net)	最小底坑深度 S(mm)	最小顶层高度 K(mm)
630	1	1400x1030	800x2100	1850x1700	1350	3950
	1.5				1450	4050
	1.75				1450	4100
680	1	1400x1100	800x2100	1850x1750	1350	3950
	1.5				1450	4050
	1.75				1450	4100
800	1	1400x1350	800x2100	1850x1950	1350	3950
	1.5				1450	4050
	1.75				1450	4100
	2				1800	4800
	2.5				2050	5000
	2				1950x2100	2050
1000	1	1600x1400	900x2100	2050x2000	1350	3950
	1.5				1450	4050
	1.75				1450	4100
	2				1800	4800
	2.5				2050	5000
	2				2150x2100	1800
1050	1	1600x1500	900x2100	2050x2100	1350	3950
	1.5				1450	4050
	1.75				1450	4100
	2				1800	4800
	2.5				2050	5000
	2				2150x2200	1800
1150	1	2000x1350	1100x2100	2550x2100	1500	4450
	1.5				1600	4550
	1.75				1700	4700
	2				1800	4800
	2.5				2050	5000
	2				2050	5000
1350	1	2000x1550	1100x2100	2550x2300	1500	4450
	1.5				1600	4550
	1.75				1700	4700
	2				1800	4800
	2.5				2050	5000
	2				2050	5000
1600	1	2000x1750	1100x2100	2550x2500	1500	4450
	1.5				1600	4550
	1.75				1700	4700
	2				1800	4800
	2.5				2050	5000
	2				2050	5000

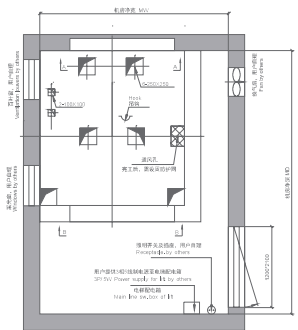
1.75m/s速度及以下, 表中底坑深度及以上底坑深度及顶层高度是在缓冲距取值为150mm时的计算值。 The pit depth and overhead is calculated under 1.75m/s and buffer distance 150mm. 以上示意图仅供参考。 Above drawing is for reference only.

UN-Victor (C) 土建图 (3-4m/s)

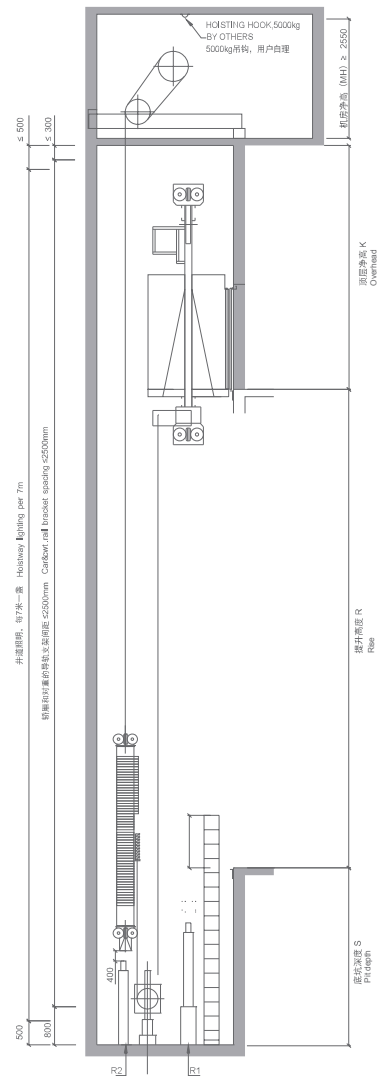
UN-Victor (C) layout drawing



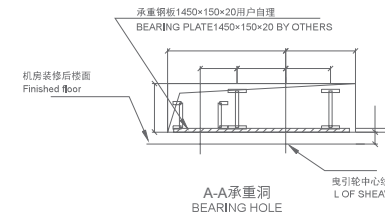
井道平面图
HOISTWAY PLAN



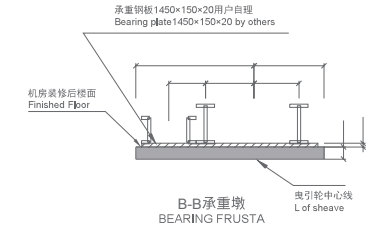
机房留孔图
CUTOUTS OF MACHINE ROOM



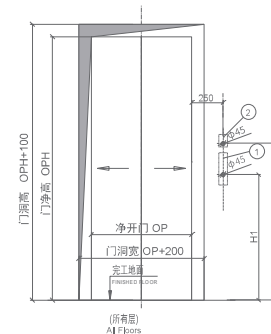
井道立面图
ELEVATION



A-A 承重洞
BEARING HOLE



B-B 承重墩
BEARING FRUSTA



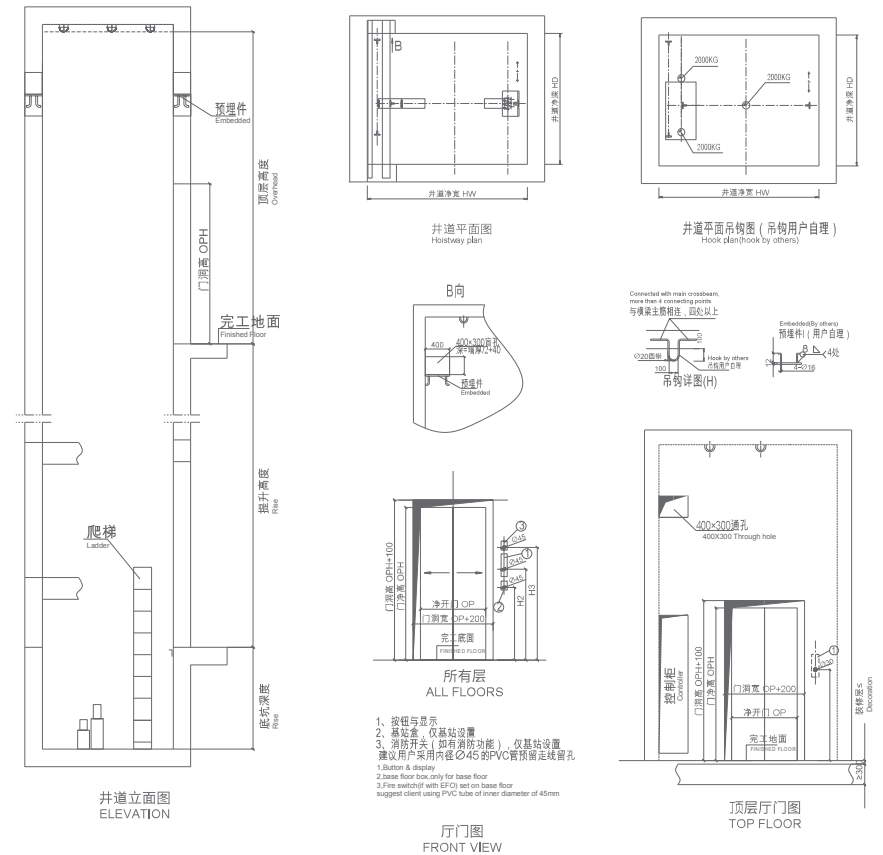
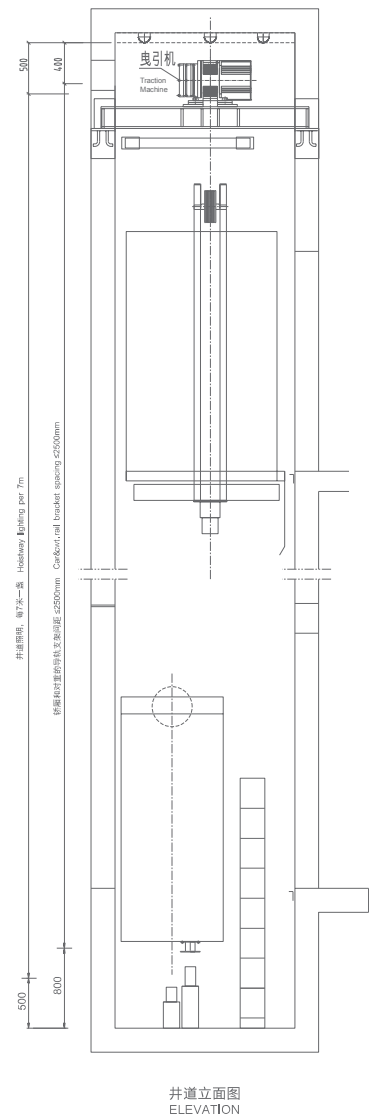
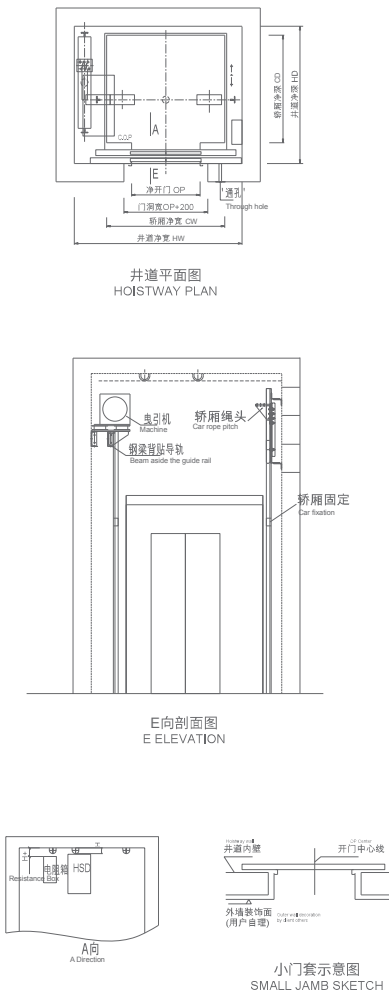
厅门图
FRONT VIEW

1. 按钮与显示
 2. 消防开关 (如有消防功能), 仅基站设置
建议用户采用内径φ45的PVC管预埋走线留孔
1. Button & display
 2. Fire switch (if with FFD) only on base floor
Suggest client use PVC tube of 45mm inner diameter

载重>Loading Capacity	速度>speed	轿厢净尺寸(mm) 宽(CV) × 深(CD) Cabin size (net)	净开门尺寸(mm) 宽(OP) × 高(CPH) Open size	井道净尺寸(mm) 宽(HW) × 深(HD) Host way size (net)	最小底坑深度 S(mm)	最小顶层高度 K(mm)
1000	3	1600x1400	900x2100	2150x2300	3200	6450
	3.5				3400	6750
	4				4800	7150
1050	3	1600x1500	900x2100	2150x2300	3200	6450
	3.5				3400	6750
	4				4800	7150
1150	3	2000x1350	1100x2100	2550x2150	3200	6450
	3.5				3400	6750
	4				4800	7150
1350	3	2000x1550	1100x2100	2550x2350	3200	6450
	3.5				3400	6750
	4				4800	7150
1600	3	2000x1750	1100x2100	2550x2550	3200	6450
	3.5				3400	6750
	4				4800	7150
2000	3	2200x1750	1100x2100	2750x2550	3200	6450
	3.5				3400	6750
	4				4800	7150

·以上底坑深度及顶层高度是在缓冲距取值为150mm时的计算值。P.D and O.H above mentioned are calculated based on the 150mm buffer distance.
·以上示意图仅供参考。Above drawing is for reference only.

UN-Victor MRL(III) 土建图 UN-Victor MRL(III) layout drawing

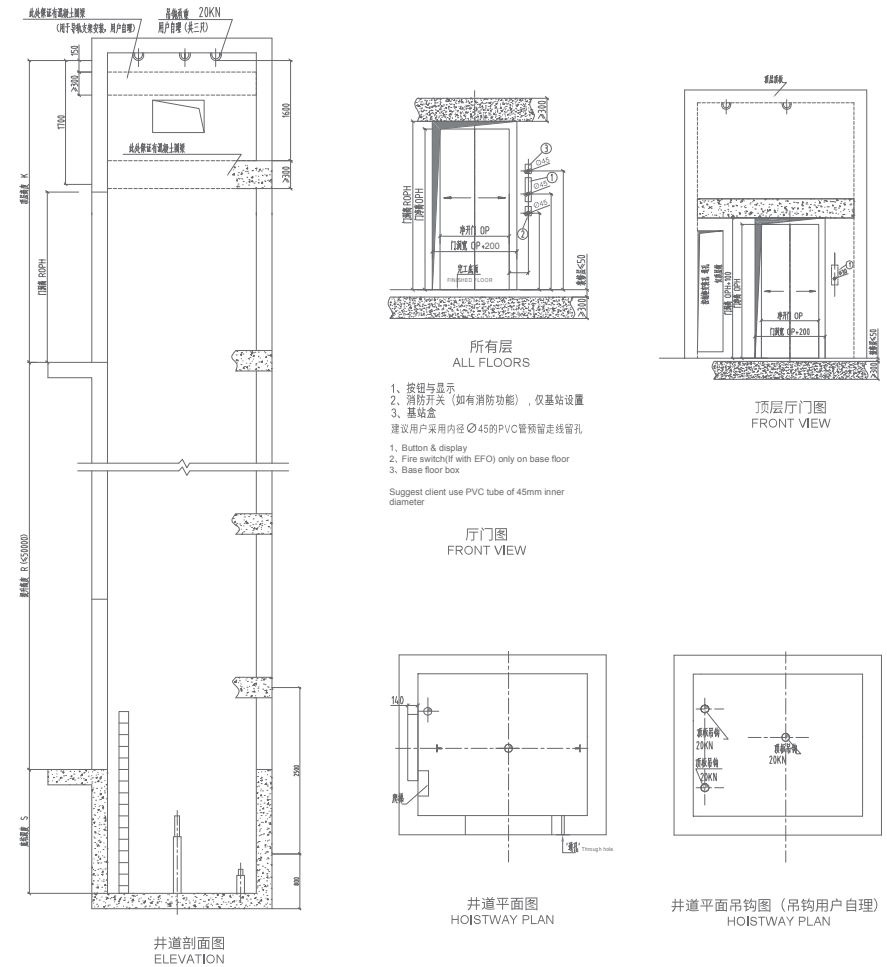
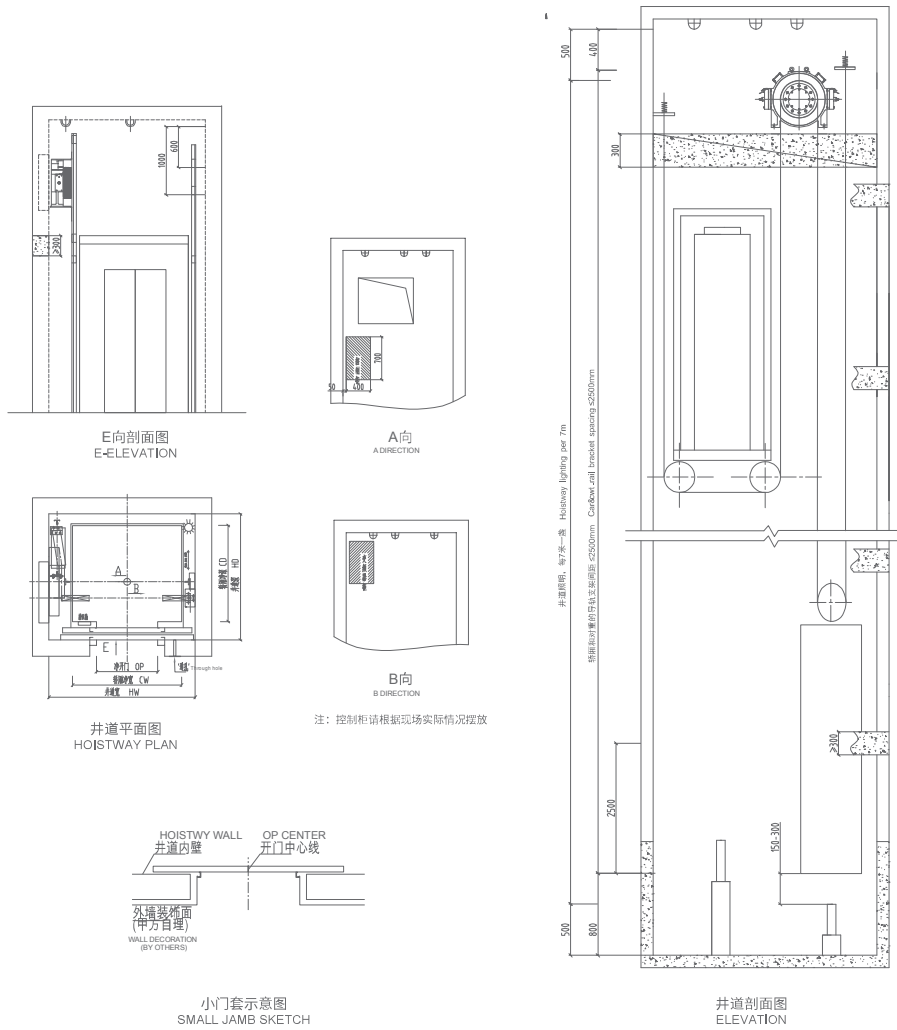


载重 [kg] Loading Capacity	速度 (m/s) speed	轿厢净尺寸 (mm) 宽(CW) x 深(CD) Cabin size (net)	净开尺寸 (mm) 宽(OP) x 高(CPH) Open size	井道净尺寸 (mm) 宽(HW) x 深(HD) Hoist-way size (net)	最小底坑深度 S(mm)	最小顶层高度 K(mm)
630	1	1050x1400	700x2100	1800x1800	1400	3950
	1.5				1450	4300
	1.75				1400	3950
800	1	1350x1400	800x2100	2000x1800	1400	3950
	1.5				1450	4300
	1.75				1400	3950
1000	1	1600x1400	900x2100	2250x1800	1400	3950
	1.5				1450	4300
	1.75				1400	3950

·以上底坑深度及顶层高度是在缓冲距取值为150mm时的计算值。 P.D and O.H.above mentioned are recalculated based on the 150mm buffer distance.
·以上示意图仅供参考。 Above drawing is for reference only.

UN-Victor MRL (T) 土建图

UN-Victor MRL (T) layout drawing

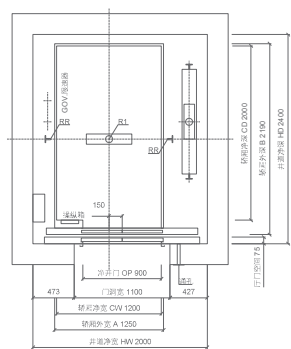


载重 (kg) Loading Capacity	速度 (m/s) speed	轿厢净尺寸 (mm) 宽 (CV) × 深 (CD) Cabin size (net)	净开门尺寸 (mm) 宽 (CP) × 高 (CPH) Open size	井道净尺寸 (mm) 宽 (W) × 深 (HD) Hoist way size (net)	最小坑深 S (mm)	最小顶层高度 K (mm)
800	1	1350x1400	800x2100	1900x1850	1450	3950
	1.5				1550	4200
	1.75					
1000	1	1600x1400	900x2100	2150x1850	1450	3950
	1.5				1550	4200
	1.75					

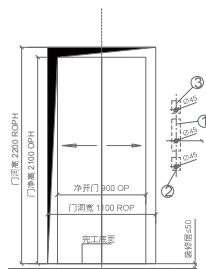
以上底坑深度及顶层高度是在缓冲距取值为150mm时的计算值。P.D and O.H. above mentioned are recalculated based on the 150mm buffer distance. 以上示意图仅供参考。Above drawing is for reference only.

担架梯 土建图 (1000kg 1.0~1.75m/s)

Layout drawing - Stretcher lift (1000kg 1.0~1.75m/s)



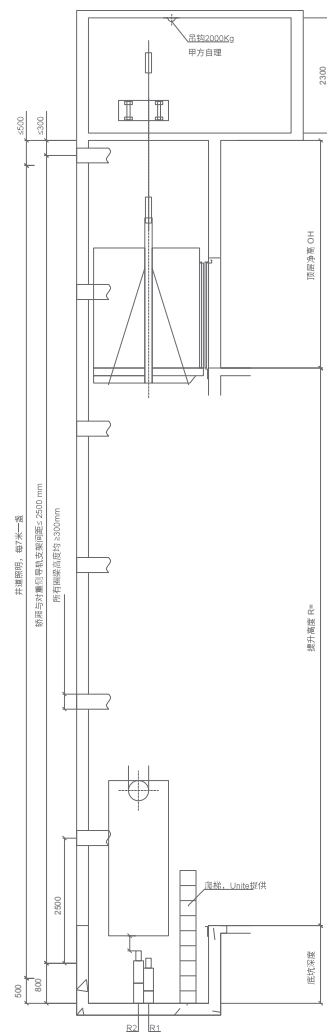
井道平面图
HOISTWAY PLAN



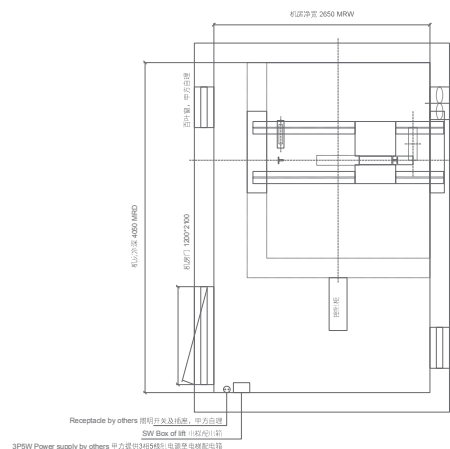
(所有层)
ALL FLOORS

1. 按钮与显示
 2. 基站盒, 仅基站设置
 3. 消防开关 (如有消防功能), 仅基站设置
- 建议用户采用内径 $\phi 45$ 的 PVC 管预留走线穿孔
1. Button & display
2. Fire switch (if with EFO) only on base floor
suggest client use PVC tube of 45mm inner diameter

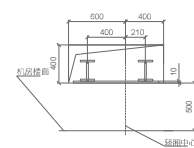
厅门图
FRONT VIEW



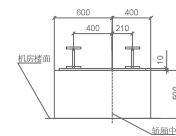
井道立面图
ELEVATION



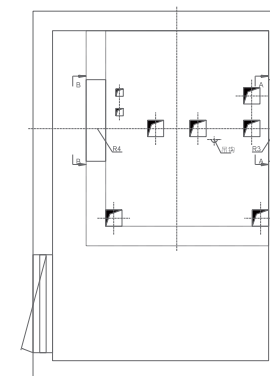
机房平面图
MACHINE ROOM PLAN



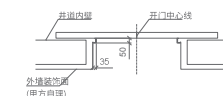
A-A承重孔
A-A BEARING HOLE



B-B承重墩
B-B BEARING HOLE



机房穿孔图
CUTOUTS OF MACHINE ROOM



小门套示意图
SMALL JAMB SKETCH